



京都大学大学院医学研究科
てんかん・運動異常生理学講座

Department of Epilepsy, Movement Disorders and Physiology
Kyoto University Graduate School of Medicine

年次報告書
Annual Report 2015

2015年8月

<表紙の言葉>

表紙のデザインは、波形様の曲線と異なる色彩からなります。脳波の波形と周波数を想像させます。脳波のサーフィンがもっと上手になることを目指して。

<Front cover>

Design of the cover page is the slow waveforms with different colors, which may remind you of brain waveforms and different frequencies.

Hoping to enjoy EEG wave surfing.

京都大学大学院医学研究科
てんかん・運動異常生理学講座

Department of Epilepsy, Movement Disorders and Physiology
Kyoto University Graduate School of Medicine

年次報告書
Annual Report 2015

2015年8月



Preface

Since one year has past after we have issued the first annual report of the Department of Epilepsy, Movement Disorders and Physiology, Kyoto University Graduate School of Medicine in 2014, it is again my great honor and pleasure that we could issue the second annual report. We appreciate very much all of you who kindly gave the very important comments and suggestion, upon the first annual reports from all over the place.

First of all, since the establishment of this department in August 2013, we have been supported, as the endowed department, by GlaxoSmithKline K.K., Niho Kohden Co., Otsuka Pharmaceutical Co., and UCB Japan Co. Ltd. Within the Kyoto University, we greatly appreciate the warmest and continuous support by the Department of Neurology (chaired by Prof. Ryosuke Takahashi), and also by the Departments of Neurosurgery (Prof. Susumu Miyamoto), Psychiatry (Prof. Toshiya Murai), Pediatrics (Prof. Toshio Heike), and Human Brain Research Center (Prof. Hidenao Fukuyama) and Diagnostic Imaging & Nuclear Medicine (Prof. Kaori Togashi).

Based on or in addition to the daily clinical practice for patients with epilepsy and movement disorders in the Kyoto University Hospital, the aim of this Department was originally planned as follows.

- 1) Clinical Research: To solve pathophysiology of epilepsy and movement disorders, and to develop new treatments that could lead to the advanced medical care. We also aim at standardizing it in clinical practice.
- 2) Translatable and Translational Research: To promote clinical practice and research of clinical neurophysiology on epilepsy and movement disorders and its clinical application, because basic- and clinical epileptology and movement disorders are very closely related to neurophysiological knowledge and methods.
- 3) Education: To provide the integrated teaching opportunity for training of physician-scientists, clinical specialists and leaders of related fields internationally.

Upon the completion of the second year, we again greatly appreciate all of the Departments of Kyoto University Graduate School of Medicine and all of the Clinical Divisions of the Kyoto University Hospital for their warmest and strong support to our activity. Without their support, we could not complete any of them by all means that were reported in this annual report. It was also strongly supported by so many collaborators, researchers and friends in Japan and also internationally.

We again tried to summarize what we could do and not, which help us analyze and understand the situation, and then help us improve and modify the current condition, and also start the new concerns. We would greatly appreciate your any feedback to us that is very helpful for our future contribution to the patients close to or distant from us.

At the end of my preface, I thank all of our friends very much whoever kindly worked hard to make and edit this annual report.

August 2015

With my best wishes,

Akio IKEDA, MD, PhD
Chairman and Professor
Department of Epilepsy, Movement Disorders and Physiology
Kyoto University Graduate School of Medicine

Index

I . Introduction	43
II . Outline	45
III. Activity report	47
Research activities	47
Clinical activities	55
Educational activities	58
Research grants obtained from extramural sources & awards	60
IV. Publications and Congress Presentations	21
Please see the contents in the Japanese section of the annual report (pages 21-35).	
Publications	21
Original articles	21
Edited books & Journal	22
Book chapters	22
Review papers	24
Presentations	26
Congress presentations	26
Invited lectures and symposium etc.	26
Oral and poster presentations	28
Other presentations	31
Educational lectures	34
Intramural lectures	35
V. Attached materials	63
Conference on Neural Oscillation 2015 and Kick-off of the Grant-in-Aid for Scientific Research on Innovative Areas: The Non-linear Neuro-oscillology - Towards Integrative Understanding of Human Nature.	63
EEG&EMG seminar	66
Visiting physician	67

I Introduction

To begin with

The details of the annual report in each aspect are shown in the following pages as done in the first annual report last time, and thus as the essence of general message directly related to our Department, I am briefly listing them which occurred or appeared in the last year. I would greatly appreciate your comment and feedback.

- 1) Evolutional changes in the social state for epilepsy
 - 2) "Oscillology": Launching of the new research field in Japan
 - 3) EEG/ Epilepsy fellowship in Kyoto University Hospital
 - 4) Teaching session
 - 5) Innovated EEG: "New wine, what you put into new leather bag"
-
- 1) Epilepsy used to be recognized as a neuropsychiatric disease in Japan historically. Once recently the genetic study, neurophysiological analysis and pathological approach have advanced for better understanding of epilepsy, it is now recognized one of the most representative disorders of clinical neuroscience for both neurology and neuropsychiatry. It is as shown by the fact that World Health Assembly closes, passing resolutions on epilepsy. <http://www.who.int/mediacentre/news/releases/2015/wha-26-may-2015/en/>
 - 2) With regard to clinical and translatability research, we have been appointed as the member of Grant-in-Aid for Scientific Research on Innovative Areas (Research in a proposed research area): Non-linear Neuro-Oscillology - Towards Integrative Understanding of Human Nature. We will aim at exploring novel multi-dimensional oscillatory phenomena, working mainly on primate/rodent models, direct recordings of human brain activity, and advanced measurements of human brain systems. (<http://www.nips.ac.jp/oscillology>)
 - 3) We have provided the special EEG/ Epilepsy fellowship as the joint activity with the great help of Department of Neurology (Prof. Takahashi), and 1-2 fellows have been always employed so far. As for clinical care in the second year, more than that of the first year, we tried to contribute to the activity of the Kyoto University Hospital and Graduate School of Medicine, as much as possible, by conduct our initial purposes.
 - 4) We also tried to contribute to the region of Kyoto and Kansai directly by patient care, and also tried to provide the teaching seminars in the field of clinical EEG, clinical epilepsy, and clinical neurophysiology by means of many medical societies, i.e., Japanese Society of Neurology, Japanese Society of Clinical Neurophysiology, and Japanese Society of Epilepsy.
 - 5) "New wine, what you put into new leather bag". Clinical EEG has the history of more than 80 years since the clinical application after the first recording from humans by Prof. Hans Berger in 1920s. In the 21st century, clinical EEG is now in the era of "wide band EEG" to record from extremely low or even DC shifts to extremely fast activity by means of technological advancement, in the daily clinical situation from patients. It could delineate or reflect the activity of glia as well as at least partly action potentials, respectively. It was by no means imagined in the last century as the clinical EEG. It is also the same for CCEPs. By keeping the basic concept that EEG reflects the neuronal (and glial) electrophysiological activity from cellular level to system level, EEG will provide us with essential information by employing the new methods and techniques constantly. Namely, "New wine (= evolutionally new findings), what you put into new leather bag (=new technology and methodology)." (It may be similar to the Japanese concept hidden in the tradition of "Regular Shrine Removal.")

In the last, for young people, we very much welcome all of you who are interested in this field from any places, and we hope to work and learn together.

With my best wishes,

Akio IKEDA, MD, PhD

Funding prospects

Establishment	June 1st, 2013
Arrival of staffs	August 1st, 2013

Name of the Endowed Department

Department of Epilepsy, Movement of Disorders and Physiology
Kyoto University Graduate School of Medicine

Founding vision

- 1) As an academic department in the university hospital, we promote researches and clinical applications of clinical neurophysiology, which is essential for elucidating the pathophysiology and developing the treatment of clinical epileptology.
- 2) It is our mission to elucidate the pathophysiology and develop the treatment of epilepsy and movement disorders so as to develop the highly advanced medicine for its application to clinical practice. We also make best efforts to offer opportunities of trainings and educations to young physicians both from Japan and abroad to foster the specialists and physician-scientists in the field of epilepsy.

Research vision

In close collaboration with the Department of Neurology, we aim at achieving the following projects in a comprehensive, efficient and multidisciplinary manner.

1. Development of medical devices for wide-band EEG recording&analysis, and its application to elucidation of epileptogenicity
2. Promotion of epilepsy surgery and research on higher brain functions&its plasticity under epileptic conditions
3. Combined imaging and neurphysiological researches on the pathophysiology of the epileptic focus
4. Research on the pathophysiology and treatment of movement disorders
5. iPS (induced pluripotent stem) cell research on epileptogenesis
6. Establishment of the training programs for the advanced specialists in the related fields
7. Promote collaborative researches with basic and mathematical scientists to understand neural oscillations underlying both physiological brain functions and pathology

Companies of endowment (in alphabetical order)

GlaxoSmithKline K.K.
NIHON KOHDEN CORPORATION
Otsuka Pharmaceutical Co., Ltd.
UCB Japan Co., Ltd.

Contact address

URL: <http://epilepsy.med.kyoto-u.ac.jp>
E-mail: akio@kuhp.kyoto-u.ac.jp (Akio Ikeda, Professor)
matsumot@kuhp.kyoto-u.ac.jp (Riki Matsumoto, Associate Professor)
epilepsy@kuhp.kyoto-u.ac.jp (Secretary)
Address: Shogoin, Sakyo-ku, Kyoto, 606-8507, JAPAN
TEL: (+81)-75-751-3662
FAX: (+81)-75-751-3663

Members of this Department and Affiliated Persons

Members of Department of Epilepsy, Movement Disorders and Physiology

Professor	Akio Ikeda, M.D., Ph.D.
Associate Professor	Riki Matsumoto, M.D., Ph.D.
Secretary	Miki Watanabe
Visiting Scientist	Kiyohide Usami, M.D. (Dept. of Neurology, Rakuwakai Otowa Hospital, Nov. 2014-) Tomoyuki Fumuro, Ph.D. (Dept. of Medical Technology and Sciences, School of Health Sciences at Fukuoka, International University of Health and Welfare, Mar. 2015-)

Affiliated members from Department of Neurology

Assistant Professor	Akihiro Shimotake, M.D., Ph.D.
Medical Staff	Katsuya Kobayashi, M.D., Ph.D.

Graduate Students (Doctoral course)

D4	B. Bayasgalan T. Sakurai
D3	M. Ota Kei Sato H. Takeyama
D2	M. Daifu-Kobayashi M. Kinboshi (from Wakayama Medical University) T. Murai M. Nakatani (from Juntendo University School of Medicine) J. Togawa K. Yoshinaga S. Neshige (from Hiroshima University School of Medicine, Apr. 2015 -)
D1	Kazuaki Sato (Apr. 2015 -) K. Tanioka (Apr. 2015 -) M. Togo (Apr. 2015 -) M. Sakamoto (May 2015 -)

Graduate Student (Master's course)

M1 Shamima Sultana (Apr. 2015 -)

EEG/Epilepsy fellowship

T. Inoue (Apr. 2013 -)

D. Fujii (Sep. 2014 - Nov. 2014)

H. Yoshimura (Jul. 2015 - Sep. 2015)

Affiliated members

Department of Neurosurgery

Senior Lecturer T. Kunieda, M.D., Ph.D.

Assistant Professor T. Kikuchi, M.D., Ph.D.

Human Brain Research Center Research and Educational Unit of Leaders for Integrated Medical System

Program-specific Associate Professor

M. Matsushashi, M.D., Ph.D.

Department of Clinical Laboratory Medicine

Assistant Professor T. Hitomi, M.D., Ph.D.

Department of Respiratory Care and Sleep Control Medicine

Assistant Professor M. Inouchi, M.D., Ph.D.





Research activities

Our main goal is to solve so-called "clinical questions", which have been raised in the daily clinical activity, and have remained unsolved yet.

Based on the concept of system neuroscience, by means of established and newly developed various methods, many clinical- and basic researches are conducted as follows.

KEY WORDS

General key words: epilepsy, epilepsy surgery, higher cortical function (motor control, praxis, language, semantic cognition, vision, will), Bereitschaftspotentials (BPs), cortico-cortical network, movement disorders, sleep disorders, autoimmune epilepsy, wideband EEG

Unique key words: ictal DC shifts, cortico-cortical evoked potentials (CCEP), cortical tremor, ictal apraxia, ictal paresis

1) Pathophysiology of medically intractable epilepsy and its treatment

a) Shaping presurgical evaluations for intractable epilepsy

Even in the 21st century, electroencephalography (EEG) remains essential in the diagnosis of "epileptogenicity". Simultaneous recording of EEG and fMRI (EEG-fMRI) is a new technique that takes advantages of both modalities and complements each other to delineate both the cortical and subcortical structures related with epileptic activities. We for the first time introduced this technique to Japan to investigate the epileptic network and underlying pathophysiology in various types of epileptic syndromes such as praxis-induced epilepsy and hypothalamic hamartoma.

Epilepsy surgery has been established as an option for treatment of intractable partial epilepsy. The epileptogenic lesions, such as hippocampal sclerosis, cavernous angioma, and brain tumor, are the most common candidates for the one-stage surgery. It is still a challenge to localize the epileptic focus in 'MRI-negative' patients. We have extensively made multidisciplinary approaches with MEG, EEG-fMRI and FDG-PET to 'visualize' the epileptic focus in these MRI-negative patients for possible treatment with epilepsy surgery. Especially in the MRI-negative cases, we occasionally need invasive evaluation with intracranial electrodes to precisely delineate the epileptic focus and map the eloquent cortices at and around the epileptic focus. In addition to the conventional frequency band (Berger rhythm: 0.3-70 Hz), advancement in medical engineering has enabled us to record electrocorticogram with a broader frequency band (wideband EEG), ranging from direct current shifts (DC shifts) to high frequency oscillation (HFO). In our recent report, several features of ictal DC shifts and HFOs were extracted in 16 patients who underwent chronic intracranial recording below (Fig. 1) (Kanazawa et al., 2014).

- 1) Sensitivity and reproducibility: Ictal DC shifts were identified in 12 out of 16 patients. In these 12 patients, ictal DC shifts occurred in 71.3% of all seizures on average.
- 2) Temporal profile: Out of seven patients with ictal DC shifts and HFOs together, five patients showed DC shifts preceding HFOs with statistical significance.
- 3) Spatial profile: In 15 patients with conventional ictal pattern, 12 patients showed DC shifts and/or HFOs. Among them, DC shifts and HFOs were observed in more restricted area than conventional ictal pattern. Mean number of electrodes showing DC, HFO and conventional ictal pattern were 9.0 ± 11.5 , 10.4 ± 8.4 and 16.3 ± 17.2 , respectively. In one patient, DC shifts were recorded from the depth electrode in the white matter, but HFOs were not recorded.
- 4) Relevance to pathological findings: DC shifts were identified in ① 75% (3/4) of glioma, ② 77.8% (7/9) of cortical dysplasia and ④ 50% (1/2) of hippocampal sclerosis. On the other hand, HFOs were in ① 50% (2/4), ② 44.4% (4/9), ③ 50% (1/2).

We have been applying such a wideband EEG technology (ictal/interictal DC shift and HFO) to further localize the

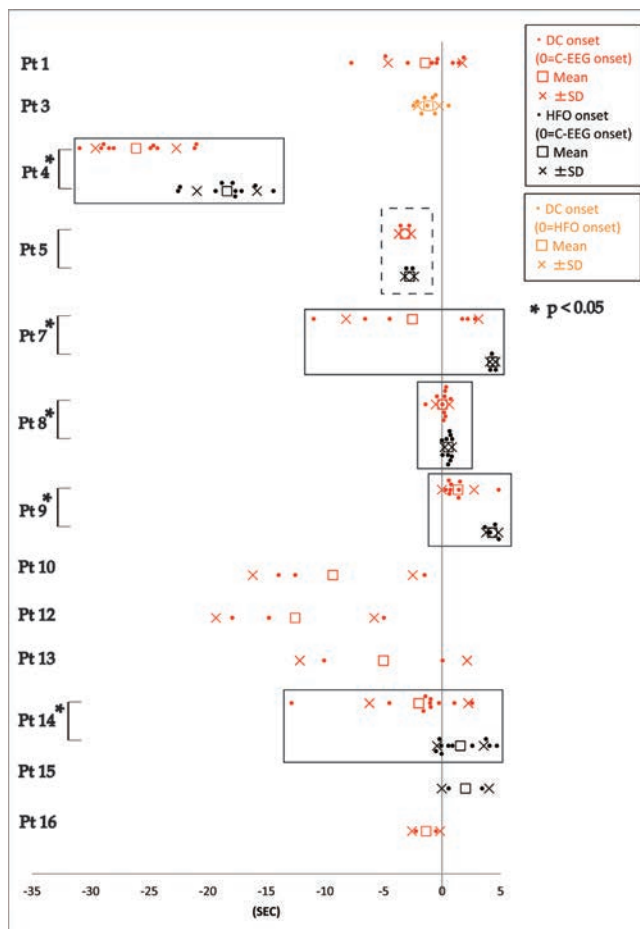


Figure 1. Onset times of ictal DC shifts (red) and HFOs (black) relative to conventional change. Patient 3 showed no conventional ictal change, and ictal DC shift onsets are plotted relative to HFO onsets, which are set to time 0. Ictal DC shifts tended to occur earlier than HFOs. In five out of seven patients with both ictal DC shifts and HFOs, the onset difference was statistically significant (Kanazawa et al., 2015)

core epileptogenic zone for epilepsy surgery.

An *in vivo* electrical tract tracing method by cortico-cortical evoked potentials (CCEPs) is an exciting new technique for presurgical cortical mapping developed in Cleveland Clinic and Kyoto University. By means of subdural electrodes implanted for presurgical evaluation, electrical pulses (0.3-ms duration, frequency of 1 Hz, alternating polarity, 1–10 mA) are directly delivered to the cortex, and CCEPs are obtained from adjacent and remote cortical regions by averaging the electrocorticogram time-locked to the stimulus onset. It promises to refine our understanding of surgical candidacy, first through a more precise and tailored evaluation of the seizure network in each individual patient, and second through greater understanding of the functional systems of the brain involved. Both are important for improving our ability to identify patients at high risk for poor surgical outcomes across multiple outcome measures.

b) Unraveling pathophysiology for treatment of epilepsy

As described above, EEG-fMRI could evaluate the whole brain including the subcortical structures. Using this technique, we have been studying the pathological basis of praxis-induced epilepsies and symptomatic epilepsy caused by hypothalamic hamartoma, a model of subcortical epilepsy and epileptic encephalopathy.

Recently the role of autoimmunity has been highlighted for a subset of encephalitis and epileptic

seizures. Nowadays, high-resolution MRI can depict subtle structural changes in the medial temporal lobe, such as hippocampus and amygdala, which are often the main inflammatory foci in autoimmune limbic encephalitis. By means of comprehensive study such as video-EEG monitoring (VEEG), neuropsychological tests, FDG-PET and MRI, we have revealed the smoldering nature of the autoimmune limbic encephalitis (Fig. 2). We have been utilizing multidisciplinary approach (VEEG, FDG-PET and 3T MRI) for offering tailor-made immunotherapy for patients with autoimmune epilepsy. Additionally, we reported that autoimmune mechanism could underlie in an epileptic patient with atypical clinical picture (triple pathology in a patient with parietal tumor) (Matsumoto et al., 2015).

Interestingly, LGI1 antibody and *LGI1* gene mutation present different phenotypes: LGI1 antibody could mediate autoimmune limbic encephalitis whereas *LGI1* is the causative gene for autosomal dominant lateral temporal lobe epilepsy (ADLTE). We established *Lgi1* heterozygous mutant rats (*Lgi1*^{L385R/+}) as an animal model of ADLTE in close cooperation with the Institute of Laboratory Animals, and are currently promoting the project with Prof. Ono’s lab in Osaka University of Pharmaceutical Sciences.

In collaboration with the Department of Pharmacy in Kyoto University Hospital, we have extensively investigated the effect of the gene polymorphism to tailor dosage of antiepileptic medication, such as CYP2C19 polymorphism for efficacy of clobazam.

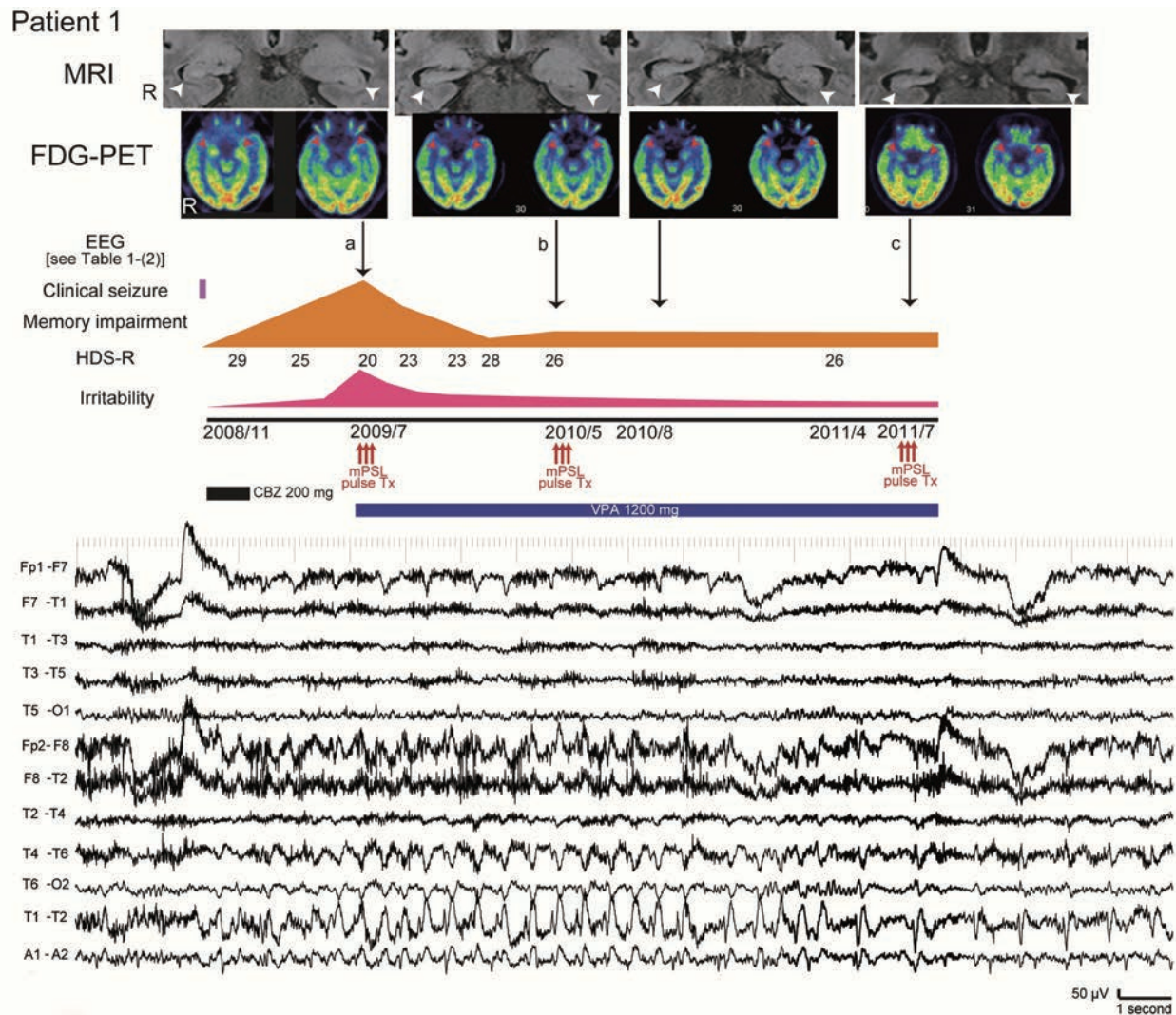


Figure 2. A patient with autoimmune encephalitis (positive for anti-VGKC complex antibodies) in our institute. Imaging: Initial MRI and FDG-PET revealed abnormal intensity/swelling and hypermetabolism in the bilateral mesial temporal lobes, respectively (arrow heads). Later, the bilateral mesial temporal lobes had become atrophic on MRI and showed improved hypermetabolism on FDG-PET gradually (top). Clinical course: the symptoms fluctuated and prolonged despite of infrequent clinical seizure (middle). Subclinical EEG seizure pattern: rhythmic activities evolve into lower frequency in the right temporal area (bottom). The occurrence rate of EEG seizure patterns corresponded to activity of encephalitis. (Kanazawa et al., 2014)

As an interventional neurophysiology, we have introduced neuro-feedback therapy for patients with intractable epilepsy. Using the DC-EEG machine, we have performed clinical trials in which the patients learn to regulate their slow cortical potential (SCP) and thereby decrease their cortical excitability. The neuro-feedback therapy is side-effect free and regarded as one of the promising alternative therapies.

We started conducting collaborative researches in epilepsy by means of iPS cells with Prof. Haruhisa Inoue (Center for iPS Cell Research and Application: CiRA).

We now try to elucidate the mechanism of vagus nerve stimulation for seizure reduction in collaboration with Kinki University (Prof. Kato) and Hiroshima University (Prof. Iida).

c) Advanced EEG analysis

EEG now has a history of more than 80 years for evaluation of brain functions and diagnosis of brain diseases,

ranging from brain death, coma to epilepsy. Medico-engineering collaboration between Prof. Shibasaki's group (Kyoto University School of Medicine, Neurology, Human Brain Research Center) and Prof. Nakamura's group (Saga University, Faculty of Science and Engineering) has been done to develop the automatic EEG interpretation system, and it is currently under clinical investigation.

2) Mapping higher functions/network and elucidating its functional alteration under pathological condition

In epilepsy surgery, it is important to map cortical functions to preserve eloquent cortices in addition to the localization of the epileptic focus. Therefore, we need to perform comprehensive 'system mapping' to help neurosurgeons to make strategy of surgery for individual patients. We have made vigorous attempts at developing various techniques for mapping higher cortical functions (e.g., language, semantic cognition, motor control) and their network for clinical application.

Functional neuroimaging tells us if specific brain regions are active during certain tasks, but activation by itself does not demonstrate the necessity of those areas. In contrast, electrical cortical stimulation, a gold standard method since mid-20th century, can delineate the cortex responsible for a particular task by making functional impairment. The functional interference is temporary (~ 5 s), discretely focal (~ 1 cm²), and in sharp contrast to chronic stroke lesions those are relatively large and usually associated with cortical plastic compensation.

However, high frequency electrical stimulation often results in afterdischarges that delay functional mapping and harbor a risk of seizure induction. Recent technical advances have enabled us to record the cortical activities relevant to higher cortical functions with wideband EEG technology - from infraslow to high gamma activities. In our institute, in addition to the gold standard method of high frequency electrical stimulation, we perform comprehensive mapping of higher cortical functions by recording epicortical event-related potential, Bereitschaftspotential (BP) and high frequency oscillation/activity. Recently, we investigated the role of the basal temporal language area (BTLA) using a comprehensive approach (Shimotake et al., 2014). Discrete local field potentials were observed in BTLA while participants completed semantic tasks. Electrical stimulation to the area evoked semantic paraphasia and prolonged reaction time selectively during the semantic tasks. The study demonstrated that the BTLA is crucial for semantic processing especially among language functions (Fig. 3). Furthermore, high frequency electrical stimulation to the area and its adjacent areas sometimes induced mirth or laughter, which demonstrated that the area is also related to semantic processing of humor (Yamao et al., 2014).

We incorporate cortico-cortical evoked potentials (CCEPs) to probe inter-areal functional connectivity in order to perform 'system mapping.' For example, in close collaboration with the Department of Neurosurgery, we have applied CCEP intraoperatively to monitor the integrity of the dorsal language pathway. In this novel approach, we first define the anterior perisylvian language area (AL) according to presurgical anatomical/functional neuroimaging findings and CCEP connectivity patterns under general anesthesia. We then monitor the integrity of the language network by stimulating AL and by recording CCEPs from the posterior perisylvian language area consecutively during resection of the tumor in the vicinity of the arcuate fasciculus (Yamao et al., Hum Brain Mapp 2014, selected as the Editor's Choice Award 2014). Furthermore, by gathering data of cortical functions and networks from many patients in various physiological and pathological states and analyzing them as a group, we attempt to feedback this valuable information into the system neuroscience by providing functional/connectivity references for non-invasive researches. This year, by comparing neural oscillations (high frequency activities, HFA >80 Hz) induced either by direct single-pulse cortical stimulation or peripheral median nerve stimulation, we elucidated that different propagation modes and/or different terminal layers determine HFA frequency bands (Kobayashi et al., 2015).

We have demonstrated the central mechanisms and functional alteration under pathological condition relevant to i) the motor control (conflict processing, negative motor phenomena, praxis and reaching), ii) language (dorsal and ventral language networks with emphasis on semantic cognition) and iii) visual functions (retinotopic mapping by functional MRI), combined with non-invasive evaluations (functional MRI, diffusion tractography, MEG, neuropsychology). Additionally, we are now tackling with decoding of complex neural signals during various tasks in

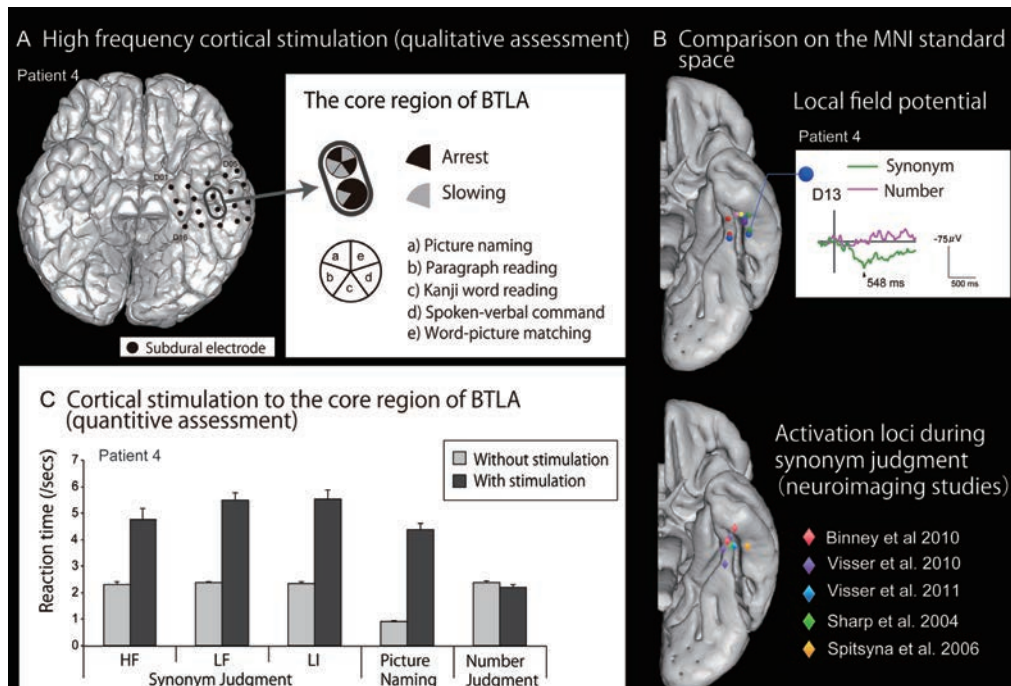


Figure 3. Comprehensive mapping of the basal temporal language/semantic area

A. Language mapping with conventional, qualitative high frequency cortical stimulation. In this representative case, high frequency cortical stimulation was delivered to the left basal temporal lobe while the patient completed various language tasks. Impairment of the tasks (arrest or slowing) was investigated during stimulation. The black oval denotes the core region of the basal temporal language areas (BTLA) defined by high frequency electrical stimulation and local field potentials obtained during naming. **B.** The six spheres in different colors on the ventral view of the left hemisphere of standard MNI space shows the each core region of BTLA in six patients (upper figure). Note their locations are consistent with activation areas in semantic functional neuroimaging studies of normal volunteers (lower figure). The representative local field potential (Patient 4) shows the clear positive activity for synonym judgment (its processing supposedly requires access to semantic memory) while no apparent activity for the control task of number size judgment. **C.** Quantitative assessment by cortical stimulation. Electrical cortical stimulation with weaker intensity was delivered to the same core region of BTLA, time-locked to the task. It produced significant slowing in synonym judgment and picture naming tasks where semantic processing was required. In contrast, the reaction time of the number size judgment task was not affected. Taken together with the local field potential recording, the finding of quantitative electrical cortical stimulation suggest the active role of BTLA in semantic processing. (modified from Shimotake et al., 2014 with permission)

cooperation with seasoned researchers in and out of the Kyoto University (Graduate School of Informatics, Dr. Satoshi Tsujimoto; Advanced Telecommunications Research Institute International, Dr. Rieko Osu; School of Psychological Sciences, the University of Manchester, Prof. Matthew Lambon-Ralph). Finally, we are pleased to announce that our 4-year activity of international/domestic neural oscillation conference led to launching the national research group of “Neuro-Oscillology” which is funded by Grant-in-Aid for Scientific Research on Innovative Areas from the Ministry of Education, Culture, Sports, Science and Technology (MEXT). Under the leadership of Prof. Atsushi Nambu at the National Institute for Physiological Sciences, Professor Ikeda will manage the research project A01 on “the Direct Recording of Human Neural Oscillations”.

3) Pathogenesis of movement disorders and its treatment

We have investigated movement disorders, mainly myoclonus and myoclonus epilepsy, by way of epidemiological, genetical and electrophysiological methods. BAFME (benign adult onset familial myoclonus epilepsy) has been investigated mainly in Japan and European countries for 20 years. The clinical pictures are as follows: i) adult onset,

ii) autosomal dominant (unknown causative gene), iii) cortical (myoclonic) tremor (tremulous myoclonus), iv) infrequent generalized seizure, v) cortical reflex myoclonus disclosed by electrophysiological study. We have also been studying BAFME since it was first reported in 1990. As its name suggests, BAFME was considered to present no progression and good prognosis. However, cortical myoclonic tremor has been proved to worsen with aging. Recently, we demonstrated slow progression of the disease, based on the electrophysiological evidence. Namely, the amplitude of somatosensory evoked potential, reflecting the cortical excitability in the primary sensori-motor cortices, more exaggerated with aging in BAFME patients than normal volunteers. We also demonstrated clinical anticipation in BAFME, in which the onset of generalized seizure and cortical (myoclonic) tremor became earlier in the next generation. The anticipation in BAFME was more apparent in patients with maternal transmission. These findings would be helpful to search a causative gene of BAFME. In addition, the nationwide questionnaire for neurologists and epileptologists in Japan revealed that BAFME patients were found diffusely without regional accumulation (Fig. 4: right).

Unverricht-Lundborg disease (ULD) is the most common form of progressive myoclonus epilepsy syndrome (PME)

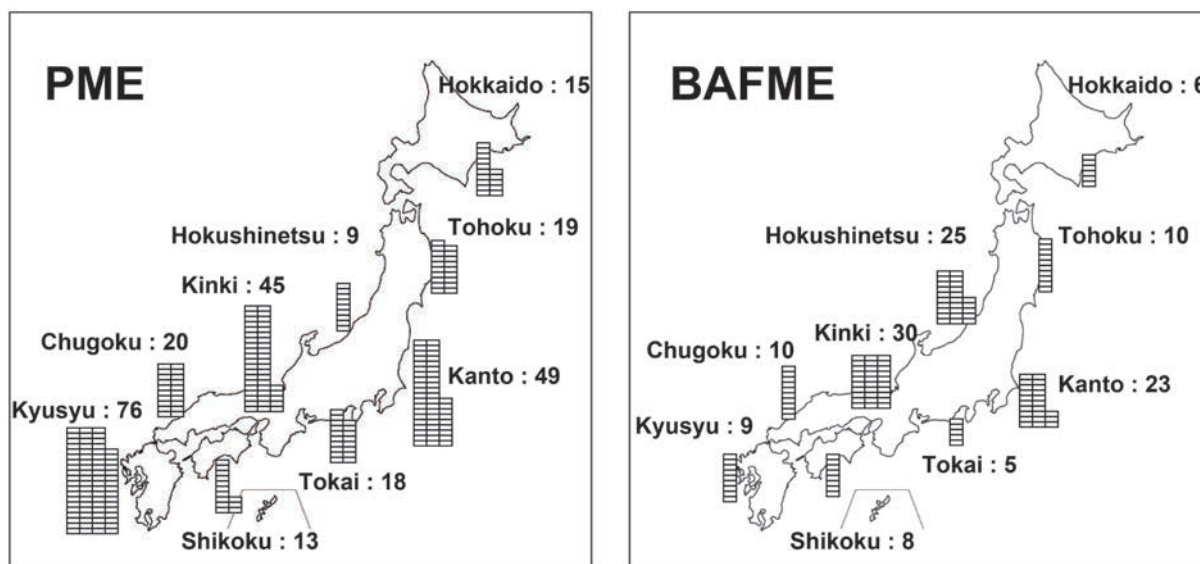


Figure 4. Regional distribution of PME and BAFME in Japan investigated by the nationwide questionnaire. There is no regional clustering in both diseases.

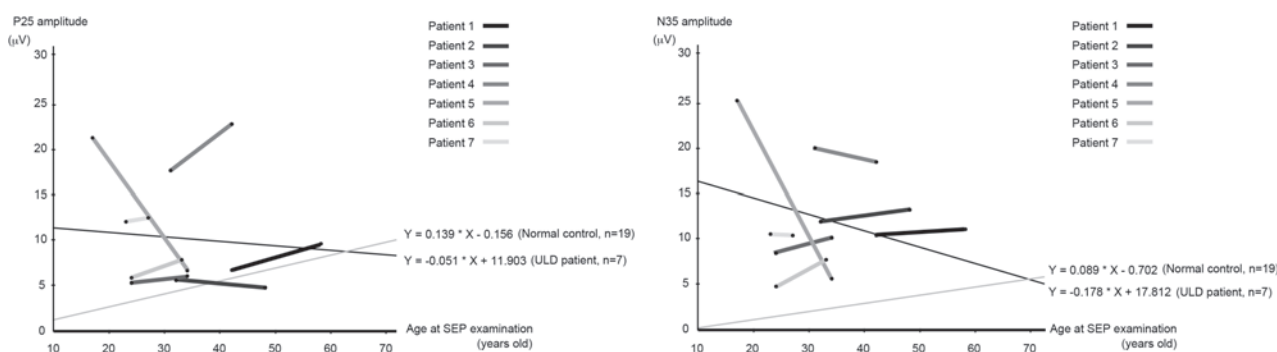


Figure 5. Correlation between the age at SEP recording and its amplitudes in 7 ULD patients. Values of P25 and N35, and the gradients of their temporal changes drawn by calculating the averaged value of the ages and amplitudes between previous and present SEP recordings (black lines) in 7 patients are compared with linear regression curves of 19 healthy subjects (gray lines). P25 and N35 amplitudes were larger in ULD patients. As for the components associated with giant SEP (i.e., P25 and N35), 7 ULD patients showed a tendency of slight decrease in amplitude during the follow-up period, and the degree of its tendency was even lower than that of healthy subjects.

in the world, but mainly reported from Baltic and Mediterranean region. The symptoms consist of epileptic seizure, myoclonus, ataxia and cognitive impairment and are gradually deteriorated. We reported ULD cases in Japan, in some of which the development of symptoms and increase of SEP amplitude became very subtle for long-term follow-up (Fig. 5) (Kobayashi et al., 2014). Similar to BAFME, PME including ULD also presented no regional clustering in Japan (Fig. 4: left).

Collaborators

We have been collaborating closely with the Departments that officially support our department. Other collaborators are listed below.

[Overseas]

Dr. Stéphanie Baulac, Ph.D.

Affiliation: Institut du Cerveau et de la Moelle épinière (ICM), Epilepsy Unit

Position: Research Director

Dr. Christophe Bernard

Affiliation: INS - Institut de Neurosciences des Systèmes, UMR INSERM 1106, Aix-Marseille Université

Position: Team leader

Dr. Marco Catani, M.D., Ph.D.

Affiliation: Natbrain lab, Department of Forensic and Neurodevelopmental Sciences, Institute of Psychiatry, King's College London

Position: Clinical Senior Lecturer and Honorary Consultant Psychiatrist

Dr. Nathan Earl Crone, M.D.

Affiliation: Department of Neurology, Johns Hopkins University School of Medicine

Position: Associate Professor

Prof. Matthew A. Lambon-Ralph, FRSLT (hons), FBPsS

Affiliation: School of Psychological Sciences, University of Manchester

Position: Professor of Cognitive Neuroscience & Associate Vice-President (Research)

Dr. Dileep R. Nair, M.D.

Affiliation: Epilepsy Center, Cleveland Clinic

Position: The Section Head of Adult Epilepsy and Director of Intraoperative Neurophysiologic monitoring

Prof. Angela Vincent, Ph.D.

Affiliation: University of Oxford

Position: Emeritus professor

[Domestic]

Dr. Koji Iida, M.D., Ph.D.

Affiliation: Department of Neurosurgery, Hiroshima University Hospital

Position: Lecturer

Dr. Yushi Inoue, M.D., Ph.D.

Affiliation: Shizuoka Institute of Epilepsy and Neurological Disorders, National Epilepsy Center, Department of Clinical Research

Position: Hospital director

Prof. Shigeki Kameyama, M.D., Ph.D.

Affiliation: Nishi-Niigata Chuo National Hospital

Position: Honorary hospital director

Prof. Amami Kato, M.D., Ph.D.

Affiliation: Department of Neurosurgery, Kinki University Hospital

Position: Professor

Prof. Takashi Nagamine

Affiliation: Department of Systems Neuroscience, Sapporo Medical University School of Medicine

Position: Professor

Prof. Masatoshi Nakamura, Ph.D.

Affiliation: Research Institute of Systems Control, Institute for Advanced Research and Education, Saga University

Position: Emeritus professor

Prof. Shigeto Nishida, Ph.D.

Affiliation: Department of Information and Communication Engineering, Faculty of Information Engineering, Fukuoka Institute of Technology

Position: Professor

Dr. Teiichi Onuma, M.D., Ph.D.

Affiliation: Musashino Kokubunji Clinic

Position: Honorary hospital director

Dr. Rieko Osu, Ph.D.

Affiliation: Department of Motor Control and Rehabilitation, ATR Computational neuroscience Labs

Position: Department Head

Dr. Satoru Saito, Ph.D.

Affiliation: Division of Cognitive Psychology in Education, Kyoto University Graduate School of Education

Position: Associate Professor

Dr. Takenao Sugi, Ph.D.

Affiliation: Institute of Ocean Energy, Saga University

Position: Associate professor

Prof. Shoji Tsuji, M.D., Ph.D.

Affiliation: Department of Neurology, The University of Tokyo Hospital

Position: Professor

Satoshi Tsujimoto, Ph.D.

Affiliation: Department of Intelligence Science and Technology Graduate School of Informatics, Kyoto University

Position: Associate professor

Dr. Hiroki Yamamoto, Ph.D.

Affiliation: Graduate School of Human and Environmental Studies, Kyoto University

Position: Assistant professor

Dr. Ikuko Yano, Ph.D.

Affiliation: Department of Pharmacy, Kyoto University Hospital

Position: Deputy director of pharmacy/Associate professor

(Listed in the alphabetical order of their family names)

Clinical activities

1) Outpatient Epilepsy Clinic. Promoting cooperation between hospitals and clinics for epilepsy care

As a team of specialists, we have made full efforts to provide the best care to patients suffering from epilepsy or movement disorders. Until recently, epilepsy has been recognized as a childhood-onset disease. However, with the advent of a superaging society, epilepsy that develops in the middle-aged or elderly has become a current problem in Japan. In addition, the number of the hospitals and physicians that can offer the epilepsy care is not adequate. Moreover, it is unclear which department, neurology, neurosurgery, or psychiatry, is in charge for the adult epilepsy service. In order to offer the optimal epilepsy care, it is very important to establish the cooperation model among general physicians and epilepsy specialists for epilepsy care like that in European and North American countries. As a tertiary care institute for epilepsy in Kyoto, we have led cooperation among primary, secondary and tertiary facilities in the Kinki district (esp. in Kyoto-Shiga region) to provide a comprehensive epilepsy service with a dedicated team of neurologists, neurosurgeons, pediatricians and psychiatrists.

In the fiscal year 2014, we saw 1092 outpatients. 103 patients were newly consulted from other hospitals and clinics in the Kinki district. We promoted hospital-clinic cooperation by returning the referral patients to their local clinics and hospitals.

2) Inpatient evaluation and treatment for epilepsy (including video-EEG monitoring)

Since 1991, we have been running the epilepsy monitoring unit (EMU) in the Neurology Ward for evaluation of patients with epilepsy. We now have two dedicated rooms for EMU, equipped with the digital video-EEG system.

By capturing seizures with simultaneous video and EEG recording, we can perform

- i) An accurate diagnosis of epilepsy: To determine whether the seizure is epileptic or non-epileptic, including movement or psychogenic disorders,
- ii) Identification of epileptic focus: To locate the epileptic focus for epilepsy surgery in patients with medically intractable epilepsy.

In the fiscal year 2014, we examined 35 patients in the EMU (subdural/depth electrode implantation: 4, presurgical evaluation: 24, evaluation of limbic encephalitis: 6, diagnosis of epilepsy: 11).

In addition, we provide patients with multidisciplinary studies for comprehensive evaluation, such as 3 tesla MRI, routine EEG, FDG-PET/SPECT, MEG and neuropsychological testing. Routine EEGs were performed in 1265 patients (including 906 outpatients) in this fiscal year.

3) Epilepsy Surgery

We have established an epilepsy surgery program with close collaboration with the Department of Neurosurgery since 1991. Since the first epilepsy surgery in 1992, we have performed more than 190 epilepsy surgeries, with the majority of patients having seizure freedom or substantial decrease leading to better QOL. We provide each patient with the individually tailored surgery plan by incorporating the findings of the multimodal studies (see below) as well as the Wada test. The patients may proceed to the invasive presurgical evaluation with intracranial electrodes (subdural and/or depth electrodes) when the epileptic focus cannot be precisely localized (such as in cases with non-lesional MRI) or the focus is located at or around the functionally important areas such as motor or language cortices. In such cases, the patients undergo the first surgery for implantation of intracranial electrodes. After electrode implantation, the patients are evaluated for the epileptic focus (by recording seizures) and the functional cortical areas (by incorporating the state-of-art mapping techniques) for 1-2 weeks. Then, the patients undergo the second surgery for resection of the epileptic focus. The patients may undergo the awake brain surgery, where the patients wake up from anesthesia if necessary. Awake surgery has the advantage to evaluate the brain functions such as motor and language during resection and monitor the 'natural' epileptic spikes without any influence from anesthetics. In the fiscal 2014, our team performed epilepsy surgery in 14 patients (4 with chronic intracranial electrode implantation) and awake brain surgery about 60 patients (including non-epilepsy cases).

4) Examinations for epilepsy

As the tertiary care epilepsy facility, we provide patients with the state-of-arts studies for the evaluation of epilepsy. As the comprehensive epilepsy program in the national university hospital, we incorporate the leading techniques as clinical research studies (IRB approved) for the optimal presurgical evaluations.

- Electroencephalography (EEG)
- Magnetoencephalography (MEG)
- FDG-PET (18F-fluorodeoxyglucose positron emission tomography)
SPECT (Single photon emission computed tomography) including ictal SPECT
- 3 tesla MRI
- functional MRI (fMRI)
- EEG-fMRI (simultaneous EEG and functional MRI recording)
- Neuropsychological testing (WAIS-III, WMS-R, WAB, semantic batteries and Kanji/Kana related tasks)
- invasive EEG monitoring with intracranial electrodes

Recently, autoimmune epilepsy is regarded as one of the important cause of epilepsy. Following tests are diagnostic for autoimmune epilepsy.

- Cerebrospinal fluid / serum antibody test

5) Development of novel treatments for epilepsy

- i) Interventional Neurophysiology: Recently, neurophysiology has been highlighted for its application to treatment of various neurological diseases. In our hospital, we apply a novel interventional neurophysiology method, neurofeedback treatment, to medically intractable patients in whom epilepsy surgery is not applicable. Patients train themselves to control the brain activity (by adjusting slow EEG potentials) to suppress epileptic seizure activity. Our preliminary study shows a good efficacy as comparable to that for the Vagus Nerve Stimulation.
- ii) Promoting the clinical trials for new anti-epileptic drugs.

6) Diagnosis and treatment for movement disorders

It is also our mission to provide the optimal care for patients with movement disorders. We provide precise diagnosis using advanced diagnostic tools for better treatment of movement disorders such as tremor, myoclonus, dystonia and other involuntary movements.

The pathophysiology of movement disorders, however, is not fully understood. We have been investigating their pathophysiology and treatment in close collaboration with the Department of Neurology and Human Brain Research Center (HBRC).

7) Simulation training of brain death determination

Since Organ Transplant Law went into force in 1997, we, in close collaboration with the affiliated departments, have been regularly practicing the course 'Simulation-based training in brain death determination'. In this course, we simulate the management about how and what to do when the donor is found and until organs are taken. The training is highly practical for those in charge of brain death determination in our hospital.



Neuropsychological assessment of semantic memory

類義語判断課題 呼称課題 絵と単語のマッチング課題

よこく 予告
ぜんちょう ぜんれき れいせい 前兆 前歴 冷静

意味関連課題

Annual course 'Simulation-based training in brain death determination' in Kyoto University Hospital



Educational activities

1) Offering the optimal education and research to Japanese and foreign physicians

■ EEG/Epilepsy fellowship

With great support by the Department of Neurology, we have set up the EEG/Epilepsy fellowship for training young neurologists, neurosurgeons, pediatricians, and psychiatrists. Three adult neurologists and one pediatric neurologist have already completed this fellowship. Our education covers various fields of epileptology with a focus on clinical neurophysiology. We plan to welcome foreign young doctors for fellowship training as well.

Contents of the fellowship program are listed as follows;

- 1) Training of routine EEG reading (emergency EEG as well)
- 2) Analysis of the long-term video-EEG monitoring for diagnosis and presurgical evaluation
- 3) Clinical practice of adult epilepsy
- 4) Training of medical treatment with anti-epileptic drugs

Graduates of EEG/Epilepsy fellowship

Reiko Tsuda (from June 2011 to August 2011)

Daiki Fujii (from September 2014 to November 2014)

Current Trainee of EEG/Epilepsy fellowship

Takeshi Inoue (from April 2013 -)

Hajime Yoshimura (from July 2015 - September 2015)

■ Intramural, multidisciplinary monthly case conference

In cooperation of the Departments of Neurology, Neurosurgery, Pediatrics, Diagnostic Radiology, Psychiatry, Rehabilitation, and Clinical Laboratory Medicine, and Human Brain Research Center, we have been holding the intramural, multidisciplinary monthly case conference for more than a decade. In the conference, we discuss the diagnosis and surgical indication of epilepsy patients for comprehensive epilepsy practice as a tertiary epilepsy special facility. The numbers of participants and the discussion cases are getting larger. As a training facility certified by Japan Epilepsy Society (JES), this conference is open for doctors outside the hospital to discuss their problem case or to obtain the credit to apply board examination of JES-certified epileptologist.

■ EEG conferences and so on

For our graduate students and EEG/Epilepsy fellows, we have been offering multifaceted educational and research trainings, such as EEG reading skills in EEG conferences twice a week, seeing outpatients and inpatients with staffs, and epilepsy/clinical neurophysiology researches. One EEG conference and research conference are held in English for training skills in English presentation. The other conference is held in Japanese and open for the in-hospital technicians and out-hospital doctors for providing them with training opportunities for the practical basic EEG reading skills (about 30-40 participants).

■ Specialist training

In the fiscal year 2014, our department produced 5 board-certified epileptologists (JES), and 1 board-certified neurophysiologist (EEG part, Japanese Society of Clinical Neurophysiology).

■ Extramural workshops

Regarding educational activities outside the institute, as the secretary office in general, we have organized the district EEG & EMG teaching course for the young doctors and technicians in Kansai (Kansai EEG & EMG workshop) every year since 2008. We also have provided educational activities by complying the request of lectures nationwide (please refer to the achievements for details). Both staffs regularly teach EEG reading and epileptology at the affiliated hospitals.

2) Offering medical staffs' education for caring of epilepsy patients

In the Kyoto University Hospital, we have offered education for epilepsy and related disorders to doctors and medical staffs. For the medical staffs in the Neurology clinic and ward, we hold comprehensive monthly lectures about pathophysiology of epilepsy, seizure semiology, and medical care of patients living with epilepsy.

3) Providing patients, family and society with valuable information

We have responded to the request by the patients, family, and society in cooperation with Japan Epilepsy Association. For example, we have joined the lectures sponsored by Japan Epilepsy Association for the public, and also the continuing medical education lectures for physicians by Japan Medical Association.

Interdisciplinary monthly case conference



EEG reading room (Department of Neurology)



Lecture for medical staffs in the Neurology clinic



Recruitment of EEG/Epilepsy fellowship



**京都大学神経内科
EEG/Epilepsy Fellowship 募集**

1.対象 卒後4年目以降の段階の神経内科、脳外科、小児科、精神科等の若手医師

2.専門研修内容

- i. 幅広い脳波判読の研修と経験
- ii. 長時間ビデオ脳波モニターの解析
- iii. てんかんの診療
- iv. 各種抗てんかん薬の臨床研修

3.期間 単年度単位で1年間（より短期研修も希望に応じて可能）

4.処遇 非常勤医師待遇

少しでも興味がある方は、一度是非ご連絡ください

連絡先：京都大学神経内科事務室、担当：松本理器、池田昭夫
tel: 075-751-3771, fax: 075-751-3265, email: neuroofc@kuhp.kyoto-u.ac.jp

Research grants obtained from extramural sources & awards

The Ministry of Education, Culture, Sports, Science and Technology of Japan Grant-in-Aids for Scientific Research (KAKENHI)

Fiscal years 2015 - 2019
Grant-in-Aid for Scientific Research on Innovative Areas
Principal investigator: Akio Ikeda
Subject number: 15H05874

Fiscal years 2015 – 2016
Grant-in-Aid for Scientific Research on Innovative Areas
Principal investigator: Riki Matsumoto
Subject number: 15H01664

Fiscal years of 2014 - 2016
Grant-in-Aid for Scientific Research (B)
Principal investigator: Akio Ikeda
Subject number : 26293209

Fiscal years 2014 - 2017
Grant-in-Aid for Scientific Research (B)
Principal investigator: Riki Matsumoto
Subject number : 26282218

Fiscal years 2014 - 2015
Grant-in-Aid for Exploratory Research
Principal investigator: Riki Matsumoto
Subject number : 26560465

Health Labour Sciences Research Grant

Fiscal years 2014 - 2016
Principal investigator: Yushi Inoue
Co-investigator: Akio Ikeda
Subject number : H26 - 難治等 - 一般 - 051

Japan Agency for Medical Research and Development (AMED)

Fiscal years of 2015 - 2017
Co-investigator: Akio Ikeda
Subject number : 15ek0109120h0001

Others

The Japan Epilepsy Research Foundation Fellowship Grant
2015
Kiyohide Usami

Kyoto University Educational & Research Promotion Foundation Fellowship Grant
2015
Kiyohide Usami

The Japan Epilepsy Research Foundation Research Grant
Fiscal years 2014 - 2016
Principal investigator: Riki Matsumoto

The Japan Epilepsy Research Foundation Research Grant
Fiscal years 2014 - 2016
Principal investigator: Tomoyuki Fumuro

Awards

Riki Matsumoto Nov, 2014 Encouragement Award (Japan Society of Clinical Neurophysiology)

Riki Matsumoto May, 2015 Excellent Teacher (Japan Neurology Society)

Prize-awarded essay

Jun 15th, 2015

Human Brain Mapping Editor's Choice Award 2014

Intraoperative dorsal language network mapping by using single-pulse electrical stimulation.

Hum Brain Mapp, 2014. 35(9): 4345-61. doi: 10.1002/hbm.22479.

Y. Yamao, R. Matsumoto*, T. Kunieda*, Y. Arakawa, K. Kobayashi, K. Usami, S. Shibata, T. Kikuchi, N. Sawamoto, N. Mikuni, A. Ikeda, H. Fukuyama and S. Miyamoto

(* co-corresponding authors)

誌上発表 Publications

原著 Original articles

1. Inoue Y, Yagi K, Ikeda A, Sasagawa M, Ishida S, Suzuki A, Yoshida K; Japan Levetiracetam N01221 Study Group: Efficacy and tolerability of levetiracetam as adjunctive therapy in Japanese patients with uncontrolled partial-onset seizures. *Psychiatry Clin Neurosci* 2015 in press. doi: 10.1111/pcn.12300.
2. Shibata S, Kunieda T, Inano R, Sawada M, Yamao Y, Kikuchi T, Matsumoto R, Ikeda A, Takahashi R, Mikuni N, Takahashi J, Miyamoto S: Risk factors for infective complications with long term subdural electrode implantation in patients with medically intractable partial epilepsy. *World Neurosurg* 2015 in press. doi: 10.1016/j.wneu.2015.03.048.
3. Yamao Y, Kunieda T, Matsumoto R: Reply to Commentary on "Neural correlates of mirth and laughter: a direct electrical cortical stimulation study". *Cortex* 2015 in press. doi: 10.1016/j.cortex.2015.03.019.
4. Fumuro T, Matsuhashi M, Miyazaki T, Inouchi M, Hitomi T, Matsumoto R, Takahashi R, Fukuyama H, Ikeda A: Alpha-band desynchronization in human parietal area during reach planning. *Clin Neurophysiol* 2015, 126: 756-762.
5. Fumuro T, Matsumoto R, Shimotake A, Matsuhashi M, Inouchi M, Urayama S, Sawamoto N, Fukuyama H, Takahashi R, Ikeda A: Network hyperexcitability in a patient with partial reading epilepsy: converging evidence from magnetoencephalography, diffusion tractography, and functional magnetic resonance imaging. *Clin Neurophysiol* 2015, 126: 675-681.
6. Hashi S, Yano I, Shibata M, Masuda S, Kinoshita M, Matsumoto R, Ikeda A, Takahashi R, Matsubara K: Effect of CYP2C19 polymorphisms on the clinical outcome of low-dose clobazam therapy in Japanese patients with epilepsy. *Eur J Clin Pharmacol* 2015, 71: 51-58.
7. Kanazawa K, Matsumoto R, Imamura H, Matsuhashi M, Kikuchi T, Kunieda T, Mikuni N, Miyamoto S, Takahashi R, Ikeda A: Intracranially recorded ictal direct current shifts may precede high frequency oscillations in human epilepsy. *Clin Neurophysiol* 2015, 126: 47-59.
8. Kunieda T, Yamao Y, Kikuchi T, Matsumoto R: New Approach for Exploring Cerebral Functional Connectivity: Review of CCEP (Cortico-cortical evoked potential). *Neurol Med Chir* 2015, 55: 374-382.
9. Matsumoto R, Mikuni N, Tanaka K, Usami K, Fukao K, Kunieda T, Takahashi Y, Miyamoto S, Fukuyama H, Takahashi R, Ikeda A: Possible induction of multiple seizure foci due to parietal tumour and anti-NMDAR antibody. *Epileptic Disord* 2015, 17: 89-94.
10. Kobayashi K, Matsumoto R, Matsuhashi M, Usami K, Shimotake A, Kunieda T, Kikuchi T, Mikuni N, Miyamoto S, Fukuyama H, Takahashi R, Ikeda A: Different Mode of Afferents Determines the Frequency Range of High Frequency Activities in the Human Brain: Direct Electrocorticographic Comparison between Peripheral Nerve and Direct Cortical Stimulation. *PLoS One* 2015 10 e0130461. doi: 10.1371/journal.pone.0130461. eCollection 2015.
11. Ota M, Shimizu T, Yoshida H, Kawata A, Kinoshita M, Nakano S, Isozaki E, Matsubara S: Clinical features and therapeutic responses of idiopathic orbital myositis. *Neurology and Clinical Neuroscience* 2015, 3: 63-67.
12. Yamao Y, Matsumoto R, Kunieda T, Arakawa Y, Kikuchi T, Shibata S, Shimotake A, Fukuyama H, Ikeda A, Miyamoto S: A possible variant of negative motor seizure arising from the supplementary negative motor area. *Clin Neurol Neurosurg* 2015, 134: 126-129.

13. Shimotake A, Matsumoto R, Ueno T, Kunieda T, Saito S, Hoffman P, Kikuchi T, Fukuyama H, Miyamoto S, Takahashi R, Ikeda A, Lambon Ralph MA: Direct Exploration of the Role of the Ventral Anterior Temporal Lobe in Semantic Memory: Cortical Stimulation and Local Field Potential Evidence From Subdural Grid Electrodes. *Cereb Cortex* 2014 in press. pii: bhu262.
14. Ayaki T, Ito H, Fukushima H, Inoue T, Kondo T, Ikemoto A, Asano T, Shodai A, Fujita T, Fukui S, Morino H, Nakano S, Kusaka H, Yamashita H, Ihara M, Matsumoto R, Kawamata J, Urushitani M, Kawakami H, Takahashi R: Immunoreactivity of valosin-containing protein in sporadic amyotrophic lateral sclerosis and in a case of its novel mutant. *Acta Neuropathologica Communications* 2014, 2: 172.
15. Inano R, Oishi N, Kunieda T, Arakawa Y, Yamao Y, Shibata S, Kikuchi T, Fukuyama H, Miyamoto S: Voxel-based clustered imaging by multi parameter diffusion tensor images for glioma grading. *Neuroimage Clin* 2014, 5: 396-407.
16. Kanazawa K, Matsumoto R, Shimotake A, Kinoshita M, Otsuka A, Watanabe O, Tanaka K, Takahashi R, Ikeda A: Persistent frequent subclinical seizures and memory impairment after clinical remission in smoldering limbic encephalitis. *Epileptic Disord* 2014, 16: 312-317.
17. Kobayashi K, Hitomi T, Matsumoto R, Kondo T, Kawamata J, Matsushashi M, Hashimoto S, Ikeda H, Koide Y, Inoue Y, Takahashi R, Ikeda A: Long-term follow-up of cortical hyperexcitability in Japanese Unverricht-Lundborg disease. *Seizure* 2014, 23: 746-750.
18. Takeuchi Y, Arakawa Y, Mikami Y, Matsumoto R, Miyamoto S: Dysembryoplastic neuroepithelial tumor with rapid recurrence of pilocytic astrocytoma component. *Brain Tumor Pathol* 2014, 31: 144-148.
19. Yamao Y, Matsumoto R, Kunieda T, Arakawa Y, Kobayashi K, Usami K, Shibata S, Kikuchi T, Sawamoto N, Mikuni N, Ikeda A, Fukuyama H, Miyamoto S: Intraoperative dorsal language network mapping by using single-pulse electrical stimulation. *Hum Brain Mapp* 2014, 35: 4345-4361.
20. Yamao Y, Matsumoto R, Kunieda T, Shibata S, Shimotake A, Kikuchi T, Satow T, Mikuni N, Fukuyama H, Ikeda A, Miyamoto S: Neural correlates of mirth and laughter: A direct electrical cortical stimulation study. *Cortex* 2014, 66: 134-140.

編集書籍・雑誌 Edited books & Journal

1. 池田昭夫主編集：松本理器，人見健文副編集：デジタル脳波記録・判読の手引き．東京，診断と治療社，2015（印刷中）．
2. 兼本浩祐主編集：池田昭夫ら副編集：臨床てんかん学．東京，医学書院，2015（印刷中）．
3. 中里信和総監修：池田昭夫ら監修：神経救急・脳神経外科周術期におけるてんかん発作の管理 ホスフェニトインによる実践集，東京，ライフ・サイエンス，2015．
4. 池田昭夫企画：特集てんかん医療の多様な展開：基礎から臨床まで 最新医学，2015，70，1009-1113．

書籍 Book chapters

〈英文 English articles〉

1. Ikeda A: Subdural EEG in frontal lobe epilepsy. In: Lhatoo S, Kahane P, Lüders H, eds. Invasive Studies of the Human Epileptic Brain: Principles and Practice of Invasive Brain Recordings and Stimulation in Epilepsy. London, Oxford University Press, 2015 in press.

2. Matsumoto R and Kunieda T: Cortico-cortical evoked potential mapping. In: Lhatoo S, Kahane P, Lüders H, eds. Invasive Studies of the Human Epileptic Brain: Principles and Practice of Invasive Brain Recordings and Stimulation in Epilepsy. London, Oxford University Press, 2015 in press.

〈和文 Japanese articles〉

3. 池田昭夫：レストレスレッグス症候群（下肢静止不能症候群）. 今日の治療指針2016年 私はこう治療している. 東京, 医学書院, 2015（印刷中）.
4. 池田昭夫：脳波の基本原則. 脳神経外科診療プラクティス6. 脳神経外科医のための脳機能と局在診断（橋本信夫監修, 三國信啓・深谷親編集）. 東京, 文光堂, 2015（印刷中）.
5. 池田昭夫：脳波で分かる脳機能. 脳神経外科診療プラクティス6. 脳神経外科医のための脳機能と局在診断（橋本信夫監修, 三國信啓・深谷親編集）. 東京, 文光堂, 2015（印刷中）.
6. 池田昭夫：2局在論からみたてんかん発作. 第7章 てんかん発作の症候学. 臨床てんかん学（兼本浩祐ら編）. 東京, 医学書院, 2015（印刷中）.
7. 石田紗恵子, 池田昭夫：13多様な焦点を示す家族性焦点性てんかん. 第11章てんかんおよびてんかん類似症候群 臨床てんかん学（兼本浩祐ら編）. 東京, 医学書院, 2015（印刷中）.
8. 井上岳司, 人見健文：シアリドーシス. 9. 進行性ミオクローヌステんかん. 第11章てんかんおよびてんかん類似症候群. 臨床てんかん学（兼本浩祐ら編）. 東京, 医学書院, 2015（印刷中）.
9. 井上岳司, 人見健文：ゴーシェ病. 9. 進行性ミオクローヌステんかん. 第11章てんかんおよびてんかん類似症候群. 臨床てんかん学（兼本浩祐ら編）. 東京, 医学書院, 2015（印刷中）.
10. 井内盛遠, 松本理器：側頭葉てんかん. 4. 年齢非依存性焦点性てんかん. 第11章てんかんおよびてんかん類似症候群. 臨床てんかん学（兼本浩祐ら編）. 東京, 医学書院, 2015（印刷中）.
11. 宇佐美清英, 松本理器：前頭葉てんかん（ジャクソン発作を除く）. 4. 年齢非依存性焦点性てんかん. 第11章てんかんおよびてんかん類似症候群. 臨床てんかん学（兼本浩祐ら編）. 東京, 医学書院, 2015（印刷中）.
12. 太田真紀子, 人見健文：ラフォラ病. 9. 進行性ミオクローヌステんかん. 第11章てんかんおよびてんかん類似症候群. 臨床てんかん学（兼本浩祐ら編）. 東京, 医学書院, 2015（印刷中）.
13. 金澤恭子, 松本理器：後頭葉てんかん. 4. 年齢非依存性焦点性てんかん. 第11章てんかんおよびてんかん類似症候群. 臨床てんかん学（兼本浩祐ら編）. 東京, 医学書院, 2015（印刷中）.
14. 小林勝哉, 人見健文：セロイドリポフスチン病. 9. 進行性ミオクローヌステんかん. 第11章てんかんおよびてんかん類似症候群. 臨床てんかん学（兼本浩祐ら編）. 東京, 医学書院, 2015（印刷中）.
15. 小林勝哉, 人見健文：ウンフェルリヒト・ルンドボルグ病. 9. 進行性ミオクローヌステんかん. 第11章てんかんおよびてんかん類似症候群. 臨床てんかん学（兼本浩祐ら編）. 東京, 医学書院, 2015（印刷中）.
16. 芝田純也, 松本理器：ジャクソン発作関連てんかん. 4. 年齢非依存性焦点性てんかん. 第11章てんかんおよびてんかん類似症候群. 臨床てんかん学（兼本浩祐ら編）. 東京, 医学書院, 2015（印刷中）.
17. 下竹昭寛, 松本理器：頭頂葉てんかん. 4. 年齢非依存性焦点性てんかん. 第11章てんかんおよびてんかん類似症候群. 臨床てんかん学（兼本浩祐ら編）. 東京, 医学書院, 2015（印刷中）.
18. 十川純平, 人見健文：DRPLA. 9. 進行性ミオクローヌステんかん. 第11章てんかんおよびてんかん類似症候群. 臨床てんかん学（兼本浩祐ら編）. 東京, 医学書院, 2015（印刷中）.
19. 人見健文, 池田昭夫：良性成人型家族性ミオクローヌステんかん. 9. 進行性ミオクローヌステんかん. 第11章てんかんおよびてんかん類似症候群. 臨床てんかん学（兼本浩祐ら編）. 東京, 医学書院, 2015（印刷中）.

20. 麓直浩, 池田昭夫: 聴覚症状を伴う常染色体優性部分てんかん (ADPEAF). 12. 家族性側頭葉てんかん. 第11章 てんかんおよびてんかん類似症候群. 臨床てんかん学 (兼本浩祐ら編). 東京, 医学書院, 2015 (印刷中).
21. 村井智彦, 人見健文: MERRF. 9. 進行性ミオクローヌステんかん. 第11章 てんかんおよびてんかん類似症候群. 臨床てんかん学 (兼本浩祐ら編). 東京, 医学書院, 2015 (印刷中).
22. 池田昭夫: てんかん 神経疾患 内科処方実践マニュアル, 改訂第2版. 東京, 日本医学出版, 2015, 370-377.
23. 井上岳司, 小林勝哉, 池田昭夫: II. けいれん重積状態: 成人例 総論. 神経救急・脳神経外科周術期における てんかん発作の管理 ホスフェニトインによる実践集 (中里信和編). 東京, ライフ・サイエンス, 2015, 40-44.
24. 井上岳司, 松本理器, 池田昭夫: てんかん (てんかん重積の治療を含む), 神経内科研修ノート (鈴木則宏編). 東京, 診断と治療社, 2015, 544-551.
25. 金澤恭子, 池田昭夫: DC 電位, Annual Review 神経2015. 東京, 中外医学社, 2015, 287-294.
26. 小林勝哉, 井上岳司, 池田昭夫: III. 非けいれん性てんかん重積状態 総論 神経救急・脳神経外科周術期における てんかん発作の管理 ホスフェニトインによる実践集 (中里信和編). 東京, ライフ・サイエンス, 2015, 96-104.
27. 下竹昭寛, 松本理器: III. 非けいれん性てんかん重積の診断・治療 神経救急・脳神経外科周術期における てんかん発作の管理 ホスフェニトインによる実践集 (中里信和編). 東京, ライフ・サイエンス2015, 119-123.
28. 人見健文, 池田昭夫: 本態性振戦, 神経疾患最新の治療 2015-2017 (小林祥泰, 水澤英洋, 山口修平編). 東京, 南江堂, 2015, 171-173.
29. 池田昭夫: てんかん, 発作のメカニズム 脳神経外科診療プラクティス3. 脳神経外科医のための脳機能と局在診断 (橋本信夫監修, 三國信啓・深谷親編). 東京, 文光堂, 2014, 306-313.
30. 宇佐美清英, 松本理器, 池田昭夫: 10章: 睡眠と前頭葉てんかん 睡眠とてんかん その密接な関連性 (千葉茂編). 東京, ライフ・サイエンス, 2014, 91-100.
31. 小林勝哉, 人見健文, 池田昭夫: Unverricht-Lundborg 病 新領域別症候群シリーズ No.31 神経症候群VI (第2版). 大阪, 日本臨床社, 2014, 299-302.
32. 麓直浩, 松本理器, 池田昭夫: 家族性側頭葉てんかん 新領域別症候群シリーズ No.31 神経症候群VI (第2版). 大阪, 日本臨床社, 2014, 413-416.
33. 松本理器: てんかん脳波とその評価. 脳神経外科診療プラクティス3. 脳神経外科医のための脳機能と局在診断 (橋本信夫監修, 三國信啓・深谷親編). 東京, 文光堂, 2014, 314-321.

総説 Review papers

〈英文 English review paper〉

1. Ikeda A: We shall not lose past medical document. Commentary. *Epilepsia* 2015 in press.
2. Kinoshita M, Ikeda A: Phantom of oscillation: Operational definition bound to improve. editorial. *Clin Neurophysiol* 2015 in press.

〈和文 Japanese review papers〉

3. 池田昭夫, 赤松直樹, 小林勝弘, 酒田あゆみ, 末永和榮, 飛松省三, 橋本修治, 松浦雅人, 重藤寛史, 松本理器: 日本臨床神経生理学学会ペーパーズ脳波の記録・判読指針小委員会: デジタル脳波の記録・判読指針. 臨床神経生理学, 2015, 43, 22-62.
4. 池田昭夫, 松本理器, 國枝武治: EMUの整備と課題. Epilepsy, 2015, 9, 23-28.
5. 池田昭夫: 特集 21世紀のてんかん医療の多様性: 基礎から臨床まで 序論. 最新医学, 2015, 70, 1009-1010.
6. 宇佐美清英, 池田昭夫: 高齢者てんかん診療の現況. 日本老年医学会雑誌, 2015, 52, 102-114.
7. 岡田知久, 金柿光憲, 池田昭夫: 病巣を見る, Double Inversion Recovery 法, 脳の見える化—構造編. 臨床神経科学, 2015, 6, 687-690.
8. 金星匡人, 向井崇浩, 徳留健太郎, 國澤直史, 清水佐紀, 芹川忠夫, 伊東秀文, 大野行弘: アストロサイトによる空間的カリウム緩衝機構とてんかん病態—新たなてんかん治療標的分子 Kir4.1 チャンネルの機能に着目して—. 最新医学, 2015, 70, 1023-1030.
9. 櫻井健世, 人見健文, 池田昭夫: カタトニーは不随意運動か? 「No」の立場から. Frontiers in Parkinson Disease, 2015, 8, 18-21.
10. 田中達也, 廣瀬伸一, 池田昭夫 (司会): 21世紀のてんかん医療の多様な展開 [座談会]. 最新医学, 2015, 70, 1011-1022.
11. 中谷光良, 池田昭夫: てんかん, 第7章神経・筋, 内科疾患の診断基準・病型分類・重症度. 内科, 2015, 115, 1235-1241.
12. 藤井大樹, 池田昭夫: てんかん, 進歩した神経内科疾患の実地診療. Medical Practice, 2015, 32, 190-196.
13. 松本理器, 國枝武治, 池田昭夫: システム神経科学とてんかんの接点. 最新医学, 2015, 70, 1051-1060.
14. 池田昭夫: てんかんの薬物治療の基本と具体例. Medicament News, 2014, 2166, 13.
15. 池田昭夫: 神経内科領域におけるてんかんの最新治療戦略. Pharma Medica, 2014, 32, 57-62.
16. 井上岳司, 松本理器, 池田昭夫: てんかんの治療 思春期・成人発症てんかんの治療 てんかん—基礎・臨床研究の最新知見. 日本臨床, 2014, 72, 853-858.
17. 金澤恭子, 池田昭夫: 難治性(薬剤抵抗性)てんかんについて. Epilepsy, 2014, 8, 47-51.
18. 人見健文, 池田昭夫: てんかん その他のふるえや鑑別すべき疾患. 治療, 2014, 96, 1619-1622.
19. 人見健文, 池田昭夫: 脳波の基礎知識, 脳波検査を行う技術師のために. 臨床神経生理学, 2014, 42, 63-65
20. 三枝隆博, 池田昭夫: 成人脳波の判読, 脳波判読のポイント, スキルアップ脳波検査—基本手技から判読のポイントまで. 臨床検査学雑誌, 2014, 42, 549-557.

学会・研究会発表 Presentations

学会発表 Congress presentations

■ 招請講演・シンポジウムなど Invited lectures and symposium etc.

〈国際学会 International presentations〉

1. Ikeda A: Epileptic slow shifts: neocortical epilepsy, How to record & analyze wide-band EEG in clinical epilepsy. slow shifts & HFO Skills workshop. (招待講演) 2015 American Clinical Neurophysiology Society (ACNS) Annual meeting (2015年アメリカ臨床神経生理学学会) (2015/2/3-8, Houston, USA)
2. Ikeda A: Newly identified temporal lobe epilepsies: amygdala enlargement, autoimmune epilepsy, autosomal dominant lateral temporal lobe epilepsy (ADLTE). (招待講演) Joint Workshop by Japanese Society of Neurology (JSN) and Indonesian Society of Neurology (ISN), RSCM (2015年日本神経学会インドネシア神経学会合同ワークショップ) (2015/3/24-25, Jakarta, Indonesia)
3. Ikeda A: Hands on and case discussion. (招待講演) Joint Workshop by Japanese Society of Neurology (JSN) and Indonesian Society of Neurology (ISN), RSCM (2015年日本神経学会インドネシア神経学会合同ワークショップ) (2015/3/24-25, Jakarta, Indonesia)
4. Matsumoto R: Functional connectivity revealed by Cortico-Cortical Evoked Potentials. (招待講演) 20th Korean Epilepsy Congress (第20回韓国てんかん学会) (2015/6/12-13, Gwangju, Korea)
5. Matsumoto R: Network Disorders. (招待講演) 20th Korean Epilepsy Congress (第20回韓国てんかん学会) (2015/6/12-13, Gwangju, Korea)
6. Ikeda A, Kanazawa K and Kunieda T: "Determination of epilepsy focus" Ictal DC shifts and HFO as surrogate markers of epileptogenicity. (シンポジウム) 8th Asian Epilepsy Surgery Congress (第8回アジアてんかん外科学会) (2014/10/4-6, Tokyo, Japan)
7. Matsumoto R: Imaging Functional and Epileptic Networks with Cortical Stimulation. 7th International Workshop on Advances in Electrocorticography. (第7回皮質脳波の進歩国際ワークショップ) (2014/11/14, Washington D.C., USA)

〈国内学会 Domestic presentations〉

8. Kanazawa K, Inoue T, Ikeda A: Slow or DC shifts as the index of epileptogenicity: a possible role on glia. (シンポジウム) 第56回日本神経学会学術大会 (2015/5/20-23, 新潟)
9. 池田昭夫, 松本理器, 國枝武治: 教育講演: ビデオ脳波モニタリングのガイドライン ソフト (安全性) とハード (機器) の2面性. 全国てんかんセンター協議会総会 (2015/2/14-15, 東京)
10. 池田昭夫: 教育講演14 脳卒中とてんかん: 依存と鑑別へのアプローチ. (招待講演) 第40回日本脳卒中学会総会 (2015/3/26-29, 広島)
11. 池田昭夫: てんかん発作の発現機構. (招待講演) 第35回日本脳神経外科コンgres総会 (2015/5/8-10, 横浜)
12. 池田昭夫: てんかん原性の臨床生理学的 biomarker? (招待講演) 第11回日本てんかん学会九州地方会 (2015/7/11, 大分)

13. 池田昭夫：正常脳波と異常脳波との区別：高頻度で見誤りやすい例。（講義）日本神経学会 第102回近畿地区地方会脳波判読セミナー（2015/7/4, 大阪）
14. 池田昭夫：日本神経学会第12回生涯教育セミナー Hands-on7 脳波。（講義, セミナー）第56回日本神経学会学術大会（2015/5/20-23, 新潟）
15. 松本理器：日本神経学会第12回生涯教育セミナー Hands-on7 脳波。（セミナー）第56回日本神経学会学術大会（2015/5/20-23, 新潟）
16. 松本理器, 國枝武治, 池田昭夫：ヒト脳の機能可塑性：皮質電気刺激・外科的脳切除の観点から。（シンポジウム）第30回日本生体磁気学会大会（2015/6/5, 旭川）
17. 松本理器, 山尾幸広, 下竹昭寛, 國枝武治, 池田昭夫：皮質電気刺激によるヒト脳機能ネットワークの探索：脳機能解剖の多次元解析。（招待講演）第35回日本脳神経外科コンgres総会・第29回微小脳神経外科解剖研究会合同セッション（2015/5/8-10, 横浜）
18. Ikeda A: Introduction: Neural oscillation activity from neuron, neuron population to cerebral cortices as the physiological and pathological basis. (Symposium) 第37回日本神経科学大会 (Neuroscience 2014) (2014/9/11-13, 横浜)
19. Matsumoto R, Kunieda T, Ikeda A: Spontaneous and induced neural oscillations in human epilepsy (Symposium) 第37回日本神経科学大会 (Neuroscience 2014) (2014/9/11-13, 横浜)
20. 池田昭夫：てんかん重積時の脳波（けいれん性, 非けいれん性）。（講義）日本神経学会第101回近畿地方会脳波判読セミナー（2014/12/13, 神戸）
21. 池田昭夫：3基軸で考えるてんかん薬物治療。（セミナー）第32回日本神経治療学会（2014/11/20-22, 東京）
22. 池田昭夫：教育講演3：本学会「デジタル脳波の記録・判読指針」の解説。（教育講演）第44回日本臨床神経生理学会学術大会（2014/11/19-21, 福岡）
23. 池田昭夫：教育講演：各診療科における脳波検査の有用性：神経内科（非てんかん性脳波異常を中心に）。（教育講演）平成26年度 先駆的臨床検査技術研修会, 第1回神経生理検査研修会（2014/11/9, 東京）
24. 太田真紀子, 下竹昭寛, 人見健文, 池田昭夫：発作性に意識減損を起こした一例。（ワークショップ）第44回日本臨床神経生理学会学術大会（2014/11/19-21, 福岡）
25. 金澤恭子, 松橋眞生, 國枝武治, 池田昭夫：発作時 DC 電位の実際の記録・解析。（スキルズ ワークショップ）第44回日本臨床神経生理学会学術大会（2014/11/19-21, 福岡）
26. 金澤恭子, 松本理器, 池田昭夫, 高橋良輔：LGI1抗体陽性亜急性脳炎等の臨床・電気生理学的特徴。（シンポジウム）第48回日本てんかん学会学術集会（2014/10/2-3, 東京）
27. 小林勝哉, 松本理器, 松橋眞生, 國枝武治, 池田昭夫：てんかん原性のバイオマーカー候補としての高周波律動（HFO）：自発性および刺激誘発性 HFO の現状と展望。（シンポジウム）第44回日本臨床神経生理学会学術大会（2014/11/19-21, 福岡）
28. 下竹昭寛, 松本理器, 山尾幸広, 國枝武治, 池田昭夫：皮質・白質電気刺激による高次脳機能ネットワークの術前マッピング。（シンポジウム）第44回臨床神経生理学会学術大会（2014/11/19-21, 福岡）
29. 人見健文, 小林勝哉, 高橋良輔, 池田昭夫：良性成人型家族性ミオクローヌスてんかん（Benign adult familial myoclonus epilepsy: BAFME）のミオクローヌスてんかんにおける位置づけ。（モーニングセミナー）第48回日本てんかん学会学術集会（2014/10/2-3, 東京）

30. 松本理器：てんかん病態下の脳機能ネットワーク：古くて新しい皮質電気刺激法を用いた機能解明とその臨床応用をめざして。（第4回奨励賞受賞記念講演）第44回日本臨床神経生理学会学術大会（2014/11/19-21，福岡）
31. 松本理器，國枝武治，池田昭夫：てんかん外科における術前皮質・白質機能マッピング。（シンポジウム）第44回日本臨床神経生理学会学術大会（2014/11/19-21，福岡）
32. 松本理器，宇佐美清英，國枝武治，池田昭夫：前頭葉てんかんと睡眠異常 Frontal lobe epilepsy and sleep disorders.（シンポジウム）第48回日本てんかん学会学術集会（2014/10/2-3，東京）

■一般発表 Oral and poster presentations

国際学会 International presentations

1. Murai T, Kinoshita M, Nakaya Y, Ikeda A, Takahashi R: Involvement of micro bleeds, representative of cerebral amyloid angiopathy, in cognitive dysfunction in Alzheimer's disease and Parkinson's disease: An MRI study. (Poster) The 67th American Academy of Neurology Annual Meeting (第67回米国神経学会) (2015/4/18-25, Washington DC, USA)
2. Kunieda T, Mikuni N, Kikuchi T, Inano R, Inada T, Takahashi Y, Nishida S, Nakae T, Shibata S, Yamao Y, Matsumoto R, Arakawa Y, Ikeda A, Miyamoto S: Preoperative evaluation of language and memory dominance estimated by intracarotid propofol test. (Poster) The 68th Annual Meeting of American Epilepsy Society (第68回米国てんかん学会) (2014/12/5-9, Seattle, USA)
3. Shibata S, Kunieda T, Matsumoto R, Yamao Y, Inano R, Nishida S, Nakae T, Kikuchi T, Arakawa Y, Takagi Y, Ikeda A, Miyamoto S: Intraoperative supplementary motor area monitoring for medial frontal lesions. (Poster) The 68th Annual Meeting of American Epilepsy Society (第68回米国てんかん学会) (2014/12/5-9, Seattle, USA)
4. Takeyama H, Matsumoto R, Kobayashi K, Usami K, Shimotake A, Kikuchi T, Kunieda T, Miyamoto S, Takahashi R, Ikeda A: Functional connectivity of the human entorhinal cortex: a cortico-cortical evoked potential study. (Poster) Neuroscience 2014 of Society for Neuroscience (2014神経科学学会) (2014/11/15-19, Washington DC, USA)

国内学会 Domestic presentations

〈英語発表 English presentations〉

5. Borgil B, Matsushashi M, Nakano N, Iida K, Katagiri M, Shimotake A, Matsumoto R, Fumuro T, Kunieda T, Kato A, Takahashi R, Ikeda A: Importance of very low frequency EEG to evaluate VNS therapy of epilepsy. (ポスター) 第56回日本神経学会学術大会 (2015/5/20-23, 新潟)
6. Hitomi T, Kobayashi K, Kinoshita M, Matsumoto R, Takahashi R, Ikeda A: A severe case with Benign Adult Familial Myoclonus Epilepsy. (ポスター) 第56回日本神経学会学術大会 (2015/5/20-23, 新潟)
7. Kobayashi K, Hitomi T, Matsumoto R, Kondo T, Sakurai T, Kawamata J, Matsushashi M, Hashimoto S, Ikeda H, Koide Y, Inoue Y, Takahashi R, Ikeda A: Long-term clinic-electrophysiological correlates in Unverricht-Lundborg disease. (ポスター) 第56回日本神経学会学術大会 (2015/5/20-23, 新潟)
8. Matsumoto R, Yamao Y, Kunieda T, Arakawa Y, Shimotake A, Kikuchi T, Shibata S, Inano R, Sawamoto N, Ikeda A, Mikuni N, Miyamoto S: Clinical implications of intraoperative CCEP monitoring in evaluating the white matter functional integrity of the dorsal language network. (口演) 第38回日本神経科学大会 (Neuroscience 2015) (2015/7/28-31, 神戸)

9. Ota M, Matsumoto R, Shimotake A, Daifu M, Kunieda T, Miyamoto S, Takahashi R, Lambon Ralph MA, Ikeda A: Kanji word processing in the ventral anterior temporal lobe: a postoperative neuropsychological study in patients with temporal lobe epilepsy. (口演) 第38回日本神経科学大会 (Neuroscience 2015) (2015/7/28-31, 神戸)
10. Shimotake A, Chen Y, Matsumoto R, Kunieda T, Miyamoto S, Takahashi R, Lambon Ralph MA, Ikeda A: The when and where of semantics in the anterior temporal lobe: temporal representational similarity analysis of electrocorticogram data. (口演) 第38回日本神経科学大会 (Neuroscience 2015) (2015/7/28-31, 神戸)
11. Shimotake A, Matsumoto R, Kobayashi K, Usami K, Kunieda T, Mikuni N, Miyamoto S, Takahashi R, Ikeda A: Functional mapping of praxis network: Electrical cortical stimulation study. (口演) 第56回日本神経学会学術大会 (2015/5/20-23, 新潟)
12. Borgil B, Matsushashi M, Nakano N, Iida K, Shimotake A, Matsumoto R, Fumuro T, Kunieda T, Kato A, Takahashi R, Ikeda A: Slow cortical potential shift as a candidate marker for the efficacy of vagus nerve stimulation for seizure suppression. (ポスター) 第37回日本神経科学大会 (Neuroscience2014) (2014/9/11-13, 横浜)
13. Fumuro T, Matsumoto R, Kinoshita M, Matsushashi M, Shimotake A, Hitomi T, Takahashi R, Fukuyama H, Ikeda A: Seizure suppression by means of self-regulation of scalp-recorded slow cortical potentials: potential treatment trial in intractable partial epilepsy. (ポスター) 第37回日本神経科学大会 (Neuroscience 2014) (2014/9/11-13, 横浜)
14. Hitomi T, Kobayashi K, Kondo T, Matsumoto R, Terada K, Kanda M, Takahashi R, Ikeda A: Diffuse brain dysfunction in Japanese benign adult familial myoclonus epilepsy. (ポスター) 第37回日本神経科学大会 (Neuroscience 2014) (2014/9/11-13, 横浜)
15. Inoue T, Matsumoto R, Kinoshita H, Kanazawa K, Kobayashi K, Shimotake A, Okada T, Ikeda A, Takahashi R: Many seizure types preceded faciobrachial dystonic seizures in a patient with anti-leucine-rich glioma-inactivated 1 (LGI1) antibody. (口演) 第48回日本てんかん学会学術集会 (2014/10/2-3, 東京)
16. Kanazawa K, Matsumoto R, Imamura H, Matsushashi M, Kikuchi T, Kunieda T, Mikuni N, Miyamoto S, Takahashi R, Ikeda A: Intracranially-recorded ictal direct current shifts may precede high frequency oscillations in human epilepsy. (口演) 第37回日本神経科学大会 (Neuroscience 2014) (2014/9/11-13, 横浜)
17. Kobayashi K, Hitomi T, Matsushashi M, Sakurai T, Matsumoto R, Mima T, Fukuyama H, Kato M, Sekimoto M, Onuma T, Takahashi R, Ikeda A: Cerebral generator mechanisms of cortical tremor in patients with benign adult familial myoclonus epilepsy (BAFME): a corticomuscular coherence study. (ポスター) 第37回日本神経科学大会 (Neuroscience 2014) (2014/9/11-13, 横浜)
18. Murai T, Kinoshita M, Nakaya Y: Involvement of microbleeds, representative of cerebral amyloid angiopathy, in cognitive dysfunction in Alzheimer's disease and Parkinson's disease: An MRI study. (ポスター) 第37回日本神経科学大会 (Neuroscience 2014) (2014/9/11-13, 横浜)
19. Shimotake A, Matsumoto R, Imamura H, Kunieda T, Fukuyama H, Mikuni N, Miyamoto S, Takahashi R, Ikeda A: Role of the ventral anterior temporal lobe in semantic cognition: neuropsychological evidence from epilepsy patients with left anterior temporal lobectomy. (口演) 第37回日本神経科学大会 (Neuroscience 2014) (2014/9/11-13, 横浜)
20. Takeyama H, Matsumoto R, Kobayashi K, Usami K, Shimotake A, Kikuchi T, Kunieda T, Miyamoto S, Takahashi R, Ikeda A: Functional connectivity from the human entorhinal cortex: a corticocortical evoked potential study. (口演) 第37回日本神経科学大会 (Neuroscience 2014) (2014/9/11-13, 横浜)
21. Usami K, Matsumoto R, Hitomi T, Kobayashi K, Shimotake A, Kikuchi T, Kunieda T, Mikuni N, Miyamoto S, Fukuyama H, Takahashi R, Ikeda A: Dynamic modulation of inter-areal neuronal integrity during sleep: direct evidence from high frequency activities induced by direct cortical stimulation in humans. (口演) 第37回日本神経科学大会 (Neuroscience 2014) (2014/9/11-13, 横浜)

22. Yamao Y, Sawamoto N, Kunieda T, Kikuchi T, Matsumoto R, Ikeda A, Takahashi R, Fukuyama H, Miyamoto S: Motor function after surgery: correlation between outcome and motor network connectivity. (口演) 第37回日本神経科学大会 (Neuroscience 2014) (2014/9/11-13, 横浜)

〈日本語発表 Japanese presentations〉

23. 稲野理賀, 國枝武治, 菊池隆幸, 稲田拓, 高橋由紀, 西田誠, 中江卓郎, 芝田純也, 松本理器, 池田昭夫, 三國信啓, 宮本亨: Wada test における記憶の評価. (口演) 第54回日本定位脳機能外科学会 (2015/1/16-17, 東京)
24. 井上岳司, 井内盛遠, 松橋眞生, 松本理器, 人見健文, 大封昌子, 小林勝哉, 金澤恭子, 下竹昭寛, 國枝武治, 高橋良輔, 池田昭夫: 発作間欠期の徐波と高周波数律動 (HFO) の共起: 難治部分てんかん患者の皮質脳波の症例検討. (ポスター) 第17回日本ヒト脳機能マッピング学会 (2015/7/2-3, 大阪)
25. 井上岳司, 酒井達也, 小林勝哉, 下竹昭寛, 井内盛遠, 松本理器, 池田昭夫, 高橋良輔: Levetiracetam により paradoxical effect を認めた側頭葉てんかんの1例. (口演) 第11回日本てんかん学会近畿地方会 (2015/7/26, 大阪)
26. 井内盛遠, 人見健文, 松本理器, 高橋良輔, 陳和夫, 池田昭夫: ルーチン脳波による閉塞性睡眠時無呼吸スクリーニングの有用性. (ポスター) 第56回日本神経学会学術大会 (2015/5/20-23, 新潟)
27. 三村直哉, 井上岳司, 下竹昭寛, 小林勝哉, 澤本伸克, 高橋良輔, 人見健文, 松本理器, 池田昭夫: 摂食以外に視覚刺激でも発作が誘発された Eating Epilepsy の1例. (口演) 第56回日本神経学会学術大会 (2015/5/20-23, 新潟)
28. 井上岳司, 井内盛遠, 松橋眞生, 松本理器, 人見健文, 大封昌子, 小林勝哉, 金澤恭子, 下竹昭寛, 國枝武治, 高橋良輔, 池田昭夫: 発作周辺期の徐波と高周波数律動 (HFO) の共起: 難治部分てんかん患者の皮質脳波の症例検討. (ポスター) 第44回日本臨床神経生理学会学術大会 (2014/11/19-21, 福岡)
29. 太田真紀子, 松本理器, 下竹昭寛, 井上岳司, 鈴木則夫, 板東充秋, 國枝武治, 宮本亨, 高橋良輔, 池田昭夫: 言語優位側縁上回の限局性皮質切除により一過性に音韻性錯書を来した左頭頂葉てんかんの一例. (口演) 第38回日本神経心理学会学術集会 (2014/9/26-27, 山形)
30. 金澤恭子, 松橋眞生, 國枝武治, 池田昭夫: 発作時 DC 電位の実際の記録・解析. (口演) 第44回日本臨床神経生理学会学術大会 (2014/11/19-21, 福岡)
31. 小林勝哉, 人見健文, 松橋眞生, 櫻井健世, 松本理器, 美馬達哉, 福山秀直, 加藤昌明, 関本正規, 大沼悌一, 高橋良輔, 池田昭夫: 良性成人型家族性ミオクローヌスてんかん (BAFME) における皮質振戦の脳内発生機構: 皮質筋コヒーレンスによる検討. (ポスター) 第44回日本臨床神経生理学会学術大会 (2014/11/19-21, 福岡)
32. 佐藤啓, Bayasgalan B, 松本理器, 文室知之, 櫻井健世, 下竹昭寛, 高橋良輔, 池田昭夫: 側頭葉および補足運動野由来のてんかん発作における発作時肢位の症候学的検討. (ポスター) 第44回日本臨床神経生理学会学術大会 (2014/11/19-21, 福岡)
33. 芝田純也, 松橋眞生, 國枝武治, 山尾幸広, 稲野理賀, 中江卓郎, 西田誠, 高橋由紀, 稲田拓, 菊池隆幸, 松本理器, 美馬達哉, 池田昭夫, 高橋良輔, 福山秀直, 宮本亨: MEG をもちいた薬剤難治性てんかん患者における安静時脳内ネットワークの研究: 少数陽性例の検討. (口演) 第73回日本脳神経外科学会学術総会 (2014/10/9-11, 東京)
34. 西田誠, 澤本伸克, 國枝武治, 高橋由紀, 稲田拓, 中江卓郎, 稲野理賀, 芝田純也, 山尾幸広, 菊池隆幸, 松橋眞生, 浦山慎一, 荒川芳輝, 岡田知久, 高橋良輔, 宮本亨: MRI による SMA の分離の試みー電気生理学的所見との比較. (口演) 第73回日本脳神経外科学会学術総会 (2014/10/9-11, 東京)
35. 三村直哉, 井上岳司, 下竹昭寛, 太田真紀子, 小林勝哉, 澤本伸克, 高橋良輔, 人見健文, 松本理器, 池田昭夫: 特定の食べ物の接種のみならず視覚刺激にても発作が誘発された内側側頭葉由来の Eating Epilepsy の1例. (口演) 第10回日本てんかん学会近畿地方会 (2014/8/2, 大阪)

その他研究会など Other presentations

〈英語発表 English presentations〉

1. Bayasgalan B, Matsuhashi M, Nakano N, Katagiri M, Kunieda T, Fumuro T, Shimotake A, Matsumoto R, Iida K, Kato A, Takahashi R, Ikeda A: Importance of actual recording of very low frequency EEG to evaluate VNS therapy of epilepsy: recovery filter could not augment effective signals. (ポスター) Neural Oscillation Conference 2015 (2015/6/25, 京都)
2. Daifu M, Inouchi M, Inoue T, Kanazawa K, Matsuhashi M, Kobayashi K, Shimotake A, Hitomi T, Matsumoto R, Kunieda T, Miyamoto S, Takahashi R, Ikeda A: Co-occurrence of slow shifts and high frequency oscillations (HFOs) in invasively recorded, interictal state. (ポスター) Neural Oscillation Conference 2015 (2015/6/25, 京都)
3. Ikeda A: Probing motor control and its abnormal distortion in Parkinson's disease and epileptic state. (シンポジウム) Neural Oscillation Conference 2015 (2015/6/25, 京都)
4. Ikeda A: Workshop A: Semiological diagnosis; Epilepsy; Masterclass. (講演) UCB-presented Asia-Pacific Neurology Masterclass (2015/6/5-6, 東京)
5. Murai T, Hitomi T, Inoue T, Kobayashi K, Shimotake A, Matsuhashi M, Inouchi M, Matsumoto R, Takahashi R and Ikeda A: Analysis of scalp-recorded, ictal direct current shift: its sensitivity and specificity. (ポスター) Neural Oscillation Conference 2015 (2015/6/25, 京都)
6. Nakatani M, Matsumoto R, Kobayashi K, Hitomi T, Inouchi M, Matsuhashi M, Kinoshita M, Kunieda T, Miyamoto S, Hattori N, Takahashi R, Ikeda A: Modulation of wide-band electrocorticographic activities by electric cortical stimulation. (ポスター) Neural Oscillation Conference 2015 (2015/6/25, 京都)
7. Takeyama H, Matsumoto R, Kobayashi K, Usami K, Shimotake A, Kikuchi T, Kunieda T, Miyamoto S, Takahashi R, Ikeda A: Functional connectivity from the human entorhinal cortex: A cortico-cortical evoked potential study. (ポスター) Neural Oscillation Conference 2015 (2015/6/25, 京都)

〈日本語発表 Japanese presentations〉

8. 池田昭夫：最近のてんかん診療の話題：新規薬の単剤療法とてんかん原性の臨床生理学的 biomarker. (講演) 第7回沖縄てんかん研究会 (2015/7/31, 沖縄)
9. 池田昭夫：臨床てんかんの最近の話題“臨床と研究の密接な関連”. (講演) 第7回宮崎てんかん実践フォーラム (2015/5/15, 宮崎)
10. 池田昭夫：てんかんの薬物治療と具体例；新規薬を中心に. (講演) 成人のためのてんかん診療フォーラム (2015/4/25, 名古屋)
11. 池田昭夫：減薬・断薬のタイミング てんかんは治癒するか. (講演) Kansai Epilepsy Program for Neurologist (2015/4/23, 大阪)
12. 池田昭夫：新規抗てんかん薬単剤療法のミッション. (講演) イーケプラ単剤療法適応追加記念講演会 てんかんプライマリケアを再考する (2015/4/18, 京都)
13. 池田昭夫：BAFME の high risk 症例の同定方法. (講演) てんかん発病防止プロジェクト第2回会議 (2015/3/5, 大阪)
14. 池田昭夫：最近のてんかんの診断と治療の話題：薬物治療の基本と具体例. (講演) 第3回埼玉県東部地区神経疾患連携懇話会 (2015/2/13, 越谷)
15. 池田昭夫：てんかんの地域診療連携体制の整備の現状. (講演) 第5回京滋てんかん病診連携研究会 (2015/1/31, 京都)

16. 池田昭夫：側頭葉由来の新しいてんかん症候群：扁桃体腫大，免疫性くすぶり型辺縁系脳炎，家族性外側側頭葉てんかんを中心に。（講演）第44回大阪てんかん研究会（2015/1/17，大阪）
17. 池田昭夫：神経内科医にとってのてんかんの診断と治療の基本。（講演）神経内科レジデント懇話会（2015/1/10，大阪）
18. 井上岳司，井内盛遠，松橋眞生，松本理器，人見健文，大封昌子，小林勝哉，金澤恭子，下竹昭寛，國枝武治，高橋良輔，池田昭夫：発作間欠期の徐波と高周波数律動（HFO）の共起：難治部分てんかん患者の皮質脳波の症例検討。（ポスター）Neural Oscillation Conference 2015（2015/6/25，京都）
19. 太田真紀子，下竹昭寛，國枝武治，大封昌子，麻生俊彦，松本理器，福山秀直，宮本亨，高橋良輔，池田昭夫：周術期の意味認知機能評価が有用であった難治側頭葉てんかん外科手術の1例。（口演）第56回京滋てんかん懇話会（2015/03/21，京都）
20. 國枝武治：小児てんかんの外科的治療戦略について～脳神経外科の立場から～。（口演）第66回兵庫県小児てんかん研究会（2015/3/2，神戸）
21. 下竹昭寛，松本理器，小林勝哉，宇佐美清英，國枝武治，三國信啓，宮本亨，高橋良輔，池田昭夫：行為関連ネットワークの機能分化と症状の解明：皮質電気刺激による研究 Functional mapping of praxis network: Electrical cortical stimulation study.（ポスター）第9回 Motor Control 研究会（2015/6/25-27，京都）
22. 音成秀一郎，家村知樹，小林勝哉，下竹昭寛，松本理器，西中和人，松本昌泰，池田昭夫，高橋良輔：稀発の意識消失を伴う転倒発作を呈した exaggerated startle reflex の高齢者の一例。（ポスター）第9回 Motor Control 研究会（2015/6/25-27，京都）
23. バヤスガラン・ボルギル，松橋眞生，文室知之，中野直樹，飯田幸治，片桐匡弥，松本理器，國枝武治，加藤天美，高橋良輔，池田昭夫：Slow cortical potentials shift as a candidate marker for the efficacy of vagus nerve stimulation for seizure suppression.（口演）第56回京滋てんかん懇話会（2015/3/21，京都）
24. 人見健文，小林勝哉，櫻井建世，シャミマ・スルタナ，佐藤啓，井上岳司，下竹昭寛，松本理器，高橋良輔，池田昭夫：睡眠が良性成人型家族性ミオクローヌスてんかん（BAFME）のてんかん性放電に与える影響。（ポスター）Neural Oscillation Conference 2015（2015/6/25，京都）
25. 松本理器：成人のてんかん診療 update.（講演）～「E」Journey to Smiling Patients～理想的な抗てんかん薬について考える（2015/7/25，東京）
26. 松本理器：脳機能とその可塑性.（講演）第2回 Post Stroke を考える～てんかん発作と痙縮へのアプローチ～（2015/6/17，福岡）
27. 松本理器：高齢者てんかんの診断・治療.（講演）第11回北勢神経フォーラム（2015/4/14，四日市）
28. 松本理器：てんかん病態と脳機能ネットワーク.（講演）第8回阪神てんかん治療懇話会（2015/3/9，尼崎）
29. 松本理器：てんかん病態下の脳機能ネットワーク.（講演）第53回摩耶神経カンファレンス（2015/3/6，神戸）
30. 池田昭夫：てんかん発作の薬物治療の基本.（招待講演）第4回教育セミナー，神経疾患に親しみ強くなる会（2014/12/20，東京）
31. 池田昭夫：最近のてんかんの診断と治療の話.（講演）てんかん治療懇話会（2014/11/20，米子）
32. 池田昭夫：側頭葉由来の新しいてんかん症候群：扁桃体腫大，免疫性くすぶり型辺縁系脳炎，家族性外側側頭葉てんかんを中心に。（特別講演）第14回神奈川けいれん治療研究会（2014/10/24，横浜）
33. 池田昭夫：最近のてんかんの診断と治療の話：薬物治療の基本と具体例.（講演）Brain conference（2014/10/20，横浜）

34. 池田昭夫：ミオクローヌスとてんかん：最近の話題. (講演) 第32回四国小児神経症例検討会 (2014/9/6, 高松)
35. 松本理器：てんかん診療の最前線. (講演) イーケプラ発売4周年記念講演会 (2014/10/24, 鹿児島)
36. 松本理器：高齢者てんかんについて. (講演) 第7回成人のためのてんかん診療フォーラム (2014/9/20, 名古屋)
37. 松本理器：てんかん病態下の脳内ネットワークの術前探索. (講演) 脳神経外科医の為のてんかん最新治療 (2014/8/22, 岡山)

講義, セミナー, 勉強会など Educational lectures

1. Matsumoto R: Single Pulse Electrical Stimulation to Probe Human Brain Connectivity and Epileptogenicity (Ground Round) (招待講演) George Washington University Epilepsy Center (2014/11/18, Washington D.C., USA)
2. 池田昭夫: てんかん性異常と関連脳波所見 (初級), 脳波判読 (中級). (講義) 第8回脳波・筋電図セミナー (2015/2/21, 京都)
3. 池田昭夫: てんかんレクチャー (1) 病歴聴取のポイント. (講演) 第2回近畿てんかんセミナー (2015/1/25, 大阪)
4. 井内盛遠: てんかんケーススタディ (1) 診断から治療まで. (講演) 第2回近畿てんかんセミナー (2015/1/25, 大阪)
5. 人見健文: 脳波判読 (中級). (講義) 第8回脳波・筋電図セミナー (2015/2/21, 京都)
6. 人見健文: 脳波レクチャー (1) 脳波判読の基礎. (講演) 第2回近畿てんかんセミナー, 大阪 (2015/1/25, 大阪)
7. 松本理器: 自己免疫性てんかんの診断と治療. (講義) 愛知医科大学精神科学講座 (2015/7/13, 長久手)
8. 松本理器: てんかん診療 update - 最近の変化を踏まえて-. (ランチョンセミナー) 第56回日本神経学会学術大会 (2015/5/20-23, 新潟)
9. 松本理器: 非てんかん性異常. (講義) 第8回脳波・筋電図セミナー (2015/2/21, 京都)
10. 松本理器: てんかんレクチャー (2) 発作時ビデオ. (講演) 第2回近畿てんかんセミナー (2015/1/25, 大阪)
11. 池田昭夫: 3基軸で考えるてんかん薬物治療. (ランチョンセミナー) 第32回日本神経治療学会総会 (2014/11/19-21, 福岡)
12. 池田昭夫: 教育講演: 脳波でわかること, 予想できること: 脳波と臨床, 脳波の判読注意等. (講義) 平成26年度 日臨技近畿支部 生理検査研修会 (2014/11/16, 京都)
13. 池田昭夫: 脳機能マッピング. (ランチョンセミナー) ふじさん・てんかん脳波ハンズオンセミナー (2014/11/1-2, 静岡)
14. 池田昭夫: てんかん脳波ハンズオン. (ハンズオン) ふじさん・てんかん脳波ハンズオンセミナー (2014/11/1-2, 静岡)
15. 池田昭夫: てんかんの定義, 診断, 治療. (講演) 大阪薬科大セミナー (2014/10/15, 高槻)
16. 池田昭夫: てんかんの分類, 診断. (講演) 第3回サマーてんかんセミナー (2014/9/7, 東京)
17. 池田昭夫: 脳機能画像時代のてんかん脳波の読み方. (講演) 大阪大学医学部てんかんセミナー (初心者からエキスパートまで) (2014/9/3, 大阪)
18. 池田昭夫: 側頭葉由来の新しいてんかん症候群: 扁桃体腫大, 免疫性くすぶり型辺縁系脳炎, 家族性外側側頭葉てんかんを中心に. (講演) 第6回熱中神経内科セミナー (2014/7/26, 京都)
19. 池田昭夫: 側頭葉由来の新しいてんかん症候群: 扁桃体腫大, 免疫性くすぶり型辺縁系脳炎, 家族性外側側頭葉てんかんを中心に. (イブニングセミナー) 第7回日本てんかん学会東海北陸地方会 (2014/7/12, 静岡)
20. 國枝武治: てんかんの治療-現状と将来. てんかん県民講座 (2014/11/16, 神戸)
21. 人見健文, 星野哲: 誘発電位 第51回日本臨床神経生理学会 技術講習会. (ライブデモ) (2014/11/21, 福岡)
22. 文室知之: 異常脳波を見逃さないポイント 症例を交えて. 京都府臨床検査技師会生理検査研修会 (2014/10/7, 京都)
23. 松本理器: 神経内科って何することろ. (講義) 奈良学園 SSH 講義 (2014/12/17, 京都)
24. 松本理器: 発作症状からみたてんかん症候群. (ランチョンセミナー) 第48回日本てんかん学会学術集会 (2014/10/3-4, 東京)

学部講義, 院内講義 Intramural lectures

1. 池田昭夫：てんかん一般について. 外来ナース講義 (2015/8/28)
2. 池田昭夫：てんかん総論, ベッドサイド診断 (問診のポイントなど). 脳波・てんかん講義シリーズ (2015/7/16)
3. 池田昭夫：てんかんの診断と治療の基礎-3. 病棟ナース講義 (2015/7/16)
4. 池田昭夫：てんかんの診断と治療の基礎-2. 病棟ナース講義 (2015/7/3)
5. 池田昭夫：てんかんの診断と治療の基礎-1. 病棟ナース講義 (2015/6/15)
6. 池田昭夫：てんかん・運動異常症の診断と治療. S7ab 臨床神経学 (神経内科学・脳神経外科学) (2015/5/29)
7. 下竹昭寛：ミニレクチャー, てんかんの診断. 第107回 京大病院 Grand Round (2015/7/13)
8. 下竹昭寛：てんかんの診断と治療. 病棟ナース講義 (2015/7/3)
9. 下竹昭寛：成人脳波判読の実際. 神経内科セミナー (2015/1/8)
10. 人見健文：11. 末梢神経疾患, 神経伝導検査と筋電図. S7ab 臨床神経学 (神経内科学・脳神経外科学) (2015/5/26)
11. 松本理器：てんかんの発作時ビデオ. 脳波・てんかん講義シリーズ (2015/7/23)
12. 松本理器：脱髄疾患・自己免疫疾患. S7ab 臨床神経学 (神経内科学・脳神経外科学) (2015/5/27)
13. 池田昭夫：脳波 (Electroencephalography). 医学部人間健康科学系専攻 後期臨床生理超音波診断学 (2014/12/12)
14. 池田昭夫：てんかん総論 ベッドサイド診断 (問診のポイントなど). 神経内科研修セミナー (2014/9/25)
15. 井上岳司：小児期と関連する成人てんかん (症例をまじえて). 院内てんかんレクチャー (2014/11/27)
16. 井内盛遠：抗てんかん薬の使い方. 院内てんかんレクチャー (2014/11/17)
17. 小林勝哉：てんかん発作重積治療と発作時対応. 院内てんかんレクチャー (2014/10/30)
18. 下竹昭寛：長時間ビデオ脳波モニタリング. 院内てんかんレクチャー (2014/10/23)
19. 人見健文：脳波：正常所見 (脳生理). 医学部人間健康科学系専攻 後期臨床生理超音波診断学 (2014/11/28)
20. 人見健文：針筋電図の基礎. 神経内科研修セミナー (2014/11/13)
21. 人見健文：正常脳波・異常脳波 (てんかんの脳波を除く). 院内てんかんレクチャー (2014/9/29)
22. 松本理器：てんかんの発作症候 ビデオ脳波を中心に. 神経内科研修セミナー (2014/10/16)



Attached materials

Conference on Neural Oscillation 2015 and Kick-off of the Grant-in-Aid for Scientific Research on Innovative Areas: The Non-linear Neuro-oscillology - Towards Integrative Understanding of Human Nature.

Since its launch 4 years ago at the Okazaki Conference Center in National Institute of Natural Sciences, the 4th conference on Neural Oscillation was held at Kyoto University as a joint-conference with the 9th Motor Control Conference. The purpose of this conference is to create a new unitary framework for understanding the functional relevance of neural oscillations from single neuron recording and animal models to human non-invasive studies. In this conference, a special lecture or symposiums were arranged for 1) Grounded theory for analyzing neural oscillation data, 2) Kuramoto-model and non-linear oscillators, and 3) Probing motor and higher brain functions from human electrocorticogram: insights from wide-band EEG oscillation. More than 250 researchers participated this year. Young researchers and postgraduate students presented their posters and enjoyed discussion with senior participants.

We are proud to announce that our 4-year collaborative activity in a multidisciplinary group from all over the country led to the launch of the 5-year research fund from the Ministry of Education, Culture, Sports, Science and Technology (MEXT). The Grant-in-Aid for Scientific Research on Innovative Areas: The Non-linear Neuro-Oscillology - Towards Integrative Understanding of Human Nature has been recently launched under the leadership of Prof. Atsushi Nambu at the National Institute for Physiological Sciences (NIPS). In this collaborative framework, we will devote ourselves to researches on wideband-EEG oscillations to understand the human nature and network diseases such as epilepsy (Research Project A03: Principal Investigator Akio Ikeda).

第9回 Motor Control 研究会サテライト国際シンポジウム

神経オシレーションカンファレンス 2015

場所：京都大学時計台講堂国際交流ホール

日程：平成 27 年 6 月 25 日（木）AM10:00-

開催趣旨：

本カンファレンスでは基礎と臨床の研究者が一堂に会して、神経機能の発現に関わるオシレーションの作動原理について、単一細胞レベルからシステムレベル、理論やモデルまで広く各分野の研究者の方々にご講演いただき、広く議論して解明していく事を目的としています。神経活動の時間的なパターン解析や、神経細胞の集成的活動（ニューラルアンサンブル）、空間的に離れた複数の神経活動間の共振やコヒーレンス、脳情報の分散コーディングなど多彩な研究手法の中身を知る良い機会でもあり、またてんかん・パーキンソン病・統合失調症など精神神経疾患の病態生理と神経オシレーションの異常（ディスリズム）における臨床的応用の可能性も探っていきます。

講演の他にポスター発表も開催し、トラベルグラントも予定しています。これまでオシレーションの研究に触れたことのない方や学生の参加も歓迎いたします。多数の研究者の皆様の参加をお待ちしております。

・シンポジウム1「オシレーションのデータ対話型理論に向けて」

講演者 北野 勝則（立命館大学） 藤澤 茂義（理化学研究所）
伊藤 浩之（京都産業大学）

・シンポジウム2「Probing motor and higher brain functions from human electrocorticogram: insights from wide-band EEG oscillation」

講演者 池田 昭夫（京都大学） 鎌田 恭輔（旭川医科大学）
Josef Parvizi（スタンフォード大学） YuanYuan Chen（マンチェスター大学）

・特別講演「リズム現象と縮約理論」

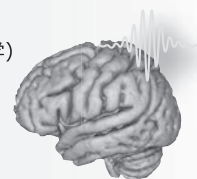
蔵本 由紀（京都大学名誉教授）

（時間・発表は変更の場合があります）

企画者：池田昭夫（京都大学） 南部篤（生理学研究所） 美馬達哉（京都大学） 松橋眞生（京都大学）

Web サイト <http://hbrc.kuhp.kyoto-u.ac.jp/NeuralOscillation>

E-mail（事務局） neuroscillation@bpp2.kuhp.kyoto-u.ac.jp







文部科学省新学術領域研究 (H27-31)

非線形発振現象を基盤としたヒューマンネイチャーの理解

HOME

ご挨拶

領域体制

計画研究

研究成果

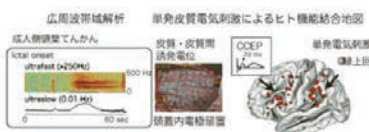
活動情報

関連リンク

計画研究

A03 ヒト脳発振現象の直接記録

ヒト脳機能は多次元・多階層の発振現象の非線形的相互作用により発現する。一方、脳機能の異常発現も作動原理の根本は共通し、てんかんは、自律的な脳ネットワークが突発的に種々の次元・階層で過剰発振する「ネットワーク病」と捉えられる。本研究計画では、正常脳機能およびてんかん発作発現にかかわる局所および広域の集団発振現象をヒト脳からの直接記録で探索する。



空間的観点からは、局所神経回路(細胞外多電極記録)からシステムレベル(皮質脳波、頭皮上脳波、脳磁図)で、発達過程の観点からは、ヒトの乳児・小児・成人脳および動物モデルで比較検討する。B班と連携し、記録データからの数理モデルを構築し、正常振動現象および病態下の異常発振の作動原理と制御機構の解明を目指す。C班と連携し、外的および内的な振動制御の手法を用いて、突発性振動異常の制御を試み、介入による多次元・多階層での生理的・病的振動の変容機構を明らかにする。



研究代表者	池田 昭夫 京都大学・特定教授・てんかん運動異常生理学
研究分担者	小林 勝弘 岡山大学病院・講師・小児神経学
	長峯 隆 札幌医科大学・教授・神経科学
	松本 理器 京都大学・特定准教授・てんかん・運動異常生理学
	國枝 武治 京都大学・講師・臨床神経学

HP: <http://epilepsy.med.kyoto-u.ac.jp/>

計画研究

A班:
新規の集団発振現象を探索

A01

A02

A03

A04

B班:
データ対話的な数理モデル構築

C班:
介入による発振制御と臨床応用

EEG&EMG seminar

～ For those who start learning EEG&EMG ～

To meet the demands of skill-learning of EEG&EMG in the Kansai region, the Kansai EEG&EMG society was founded at 2008 (representative: Dr. Shuji Hashimoto). The 8th EEG&EMG seminar was held in this February, and more than 160 young doctors and technologists gathered from all over the Kansai region. Our department, in close cooperation with the Department of Neurology, has served as the secretary office of this seminar to organize the seminar and revise the program contents based upon the feedback from the audience. The skilled clinical neurophysiologists from all over the Kansai region gather together to provide talks and hands-on lectures to educate young doctors and technologists for enhancement of the quality of EEG&EMG in this region.



Visiting physician

[Overseas]

December 3, 2014

Dr. Steven Z. Rapcsak, M.D.

Affiliation: Neurology, Psychology, and Speech, Language, & Hearing Science, University of Arizona

Position: Professor

December 4, 2014

Dr. Meng-Fai Kuo, M.D., Ph.D.

Affiliation: Division of Pediatric Neurosurgery, Department of Neurosurgery, National Taiwan University Children's Hospital

Position: Chief and Associate Professor

Dr. Shih-Hung yang, M.D., Ph.D.

Affiliation: Division of Pediatric Neurosurgery, Department of Neurosurgery, National Taiwan University Children's Hospital

Position: Assistant Professor

Dr. Wen-Ching Wong, M.D.

Affiliation: Department of Pediatric Neurology, National Taiwan University Children's Hospital

Position: Lecturer

Dr. Ming-Kai Pan, M.D., Ph.D.

Affiliation: Department of Neurology,
National Taiwan University Hospital

Li-May Sung, Ph.D.

Affiliation: Graduate Institute of Linguistics, National Taiwan University

Position: Director and Associate Professor

Chia-Rung Lu, Ph.D.

Affiliation: Graduate Institute of Linguistics, National Taiwan University

Position: Assistant Professor

Bo-Cheng Kuo, Ph.D.

Affiliation: Graduate Institute of Linguistics, National Taiwan University

Position: Assistant Professor

April 1, 2015

Dr. Yue-Loong Hsin, M.D.

Affiliation: Department of Neurology, Chung Shan Medical University Hospital

Position: Chief

June 24-26, 2015

Yuanyuan Chen, Ph.D.

Affiliation: Neuroscience and Aphasia Research Unit, University of Manchester

Position: Research Associate

June 24-26, 2015

Dr. Josef Parvizi, M.D., Ph.D.

Affiliation: Stanford Human Intracranial Cognitive Electrophysiology Program (SHICEP), Stanford Program for Intractable Epilepsy, Stanford University

Position: Associate Professor, Director

[Domestic]

July 7, 2014

Dr. Rei Enatsu, M.D., Ph.D.

Affiliation: Department of Neurosurgery, Sapporo Medical University

Position: Assistant Professor

March 25, 2015

Dr. Kiyohito Terada, M.D., Ph.D.

Affiliation: Shizuoka Institute of Epilepsy and Neurological Disorders

Position: Chief Medical Staff

July 15, 2015

Keiichi Kitajo, Ph.D.

Affiliation: Rhythm-based Brain Information Processing Unit, RIKEN BSI-TOYOTA Collaboration Center, RIKEN Brain Science Institute

Position: Unit leader

Yuka Okazaki, Ph.D.

Affiliation: Rhythm-based Brain Information Processing Unit, RIKEN BSI-TOYOTA Collaboration Center, RIKEN Brain Science Institute

Position: Research Scientist

京都大学大学院医学研究科てんかん・運動異常生理学講座
Department of Epilepsy, Movement Disorders and Physiology
Kyoto University Graduate School of Medicine

年次報告書 Annual Report

発行 2015年8月

発行元 京都大学大学院医学研究科てんかん・運動異常生理学講座
〒606-8507 京都市左京区聖護院川原町 54
TEL : 075-751-3662 FAX : 075-751-3663

印刷 ユニバーズ印刷
〒617-0843 京都府長岡京市友岡 2-10-2
TEL : 075-953-4335 FAX : 075-953-4336
